



MASAKALI

BY AYESHA



By dressing with such splendor, you tell the world that your tastes are immaculate and miles ahead of your contemporaries. A true monarch of style.

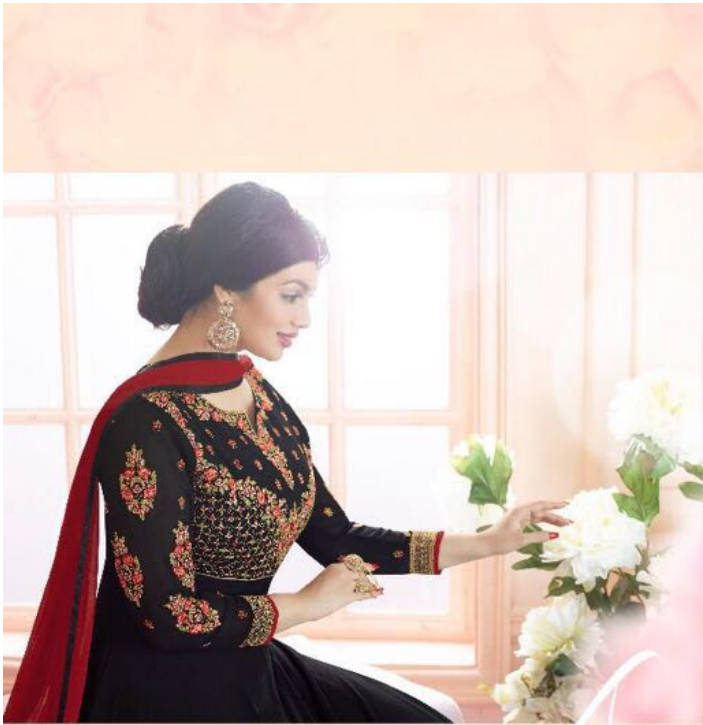
-1001





Shree[®]
FABS

You are the prize of all
the lands. Your
threads represent
your beauty the same
beauty princes of all
the kingdoms vie for.



Styles change. Fads come and go.
Trends are volatile and unpredictable.
But true fashion is eternal. Such is
engraved on the tree of eternity deep
within the Garden of Magic.

1004



Shree®
FABR

You stop to wonder
what they're
celebrating. Which is
when you realize that
you are the occasion.

1005



1001



1002



1003



1004



1005



MASAKALI
BY AYESHA



The sparkling glitter of innocence is best exemplified through these designs.
Be the queen of virtue you were destined to be.

1003



Shree®
FABR

Of all the things in
heaven and earth that
man holds close to his
heart, when you look
as you do in these
threads, he holds
nothing dearer, he
above the rest.

-1002



1003



When your Dress has been designed with the most intricate precision by the most gifted artists, what do we call you but a masterpiece?

SHYAMALI

Shree®
FABR

Shree®
FABR

Email : shreefabr@gmail.com
Follow us : Shree Fabr

"Empowering women"



MASAKALI
BY AYESHA