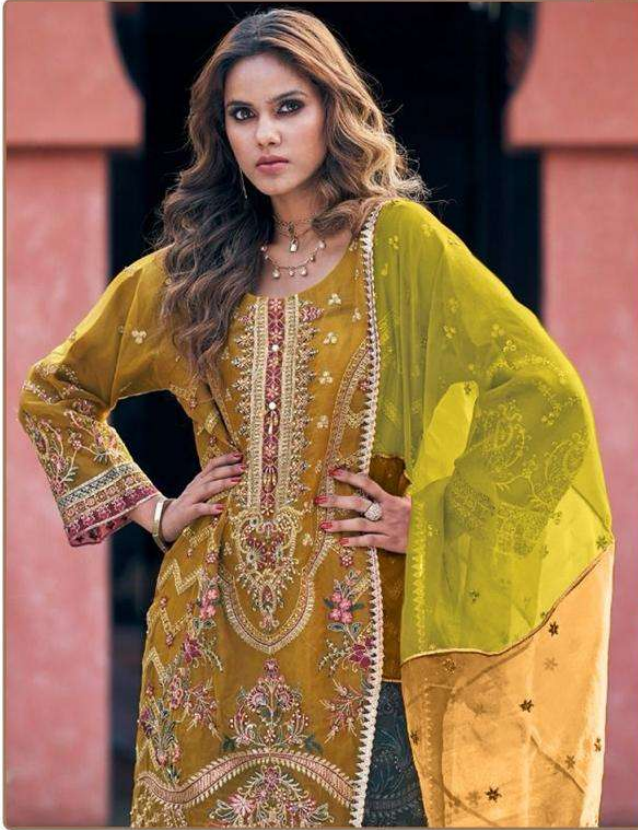


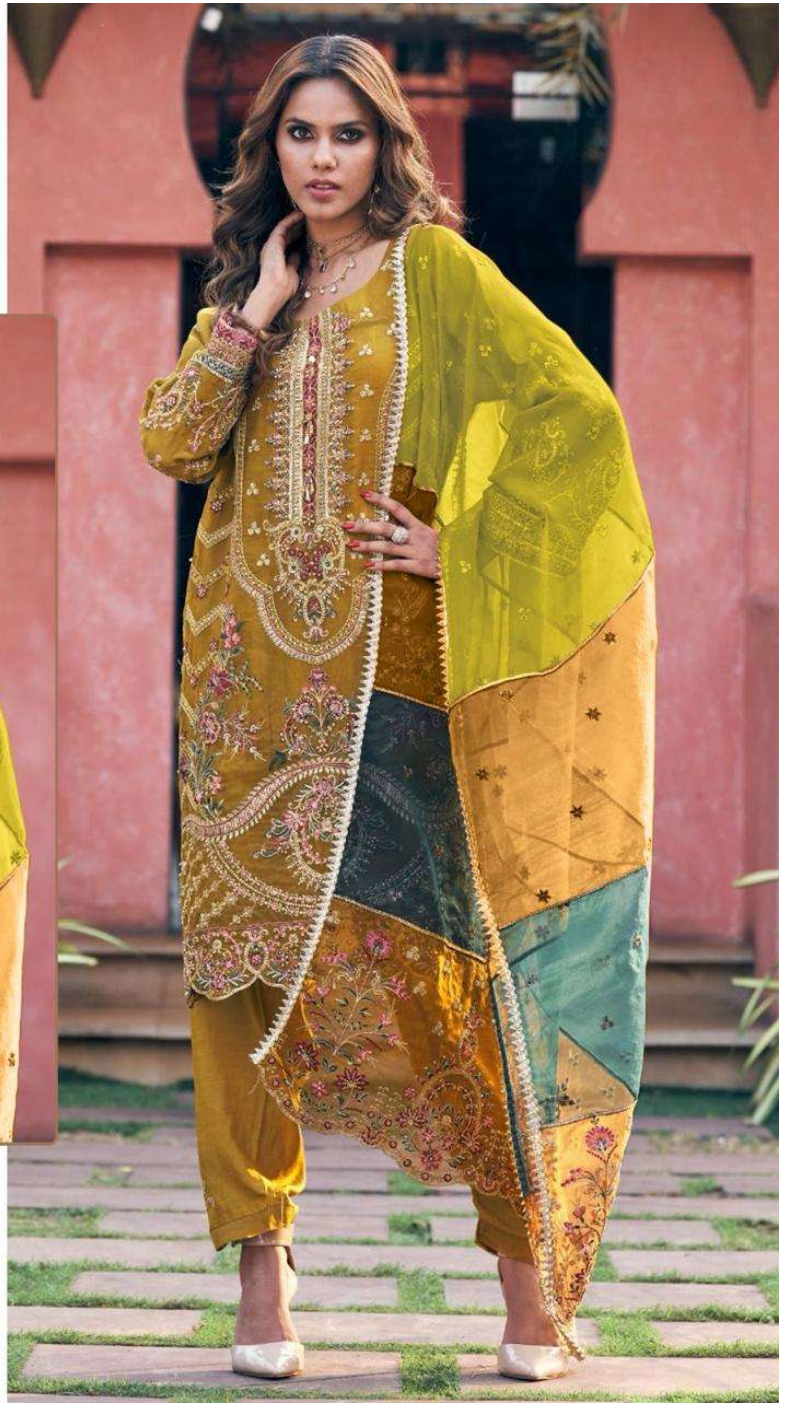


READYMAD
#R-1133-A



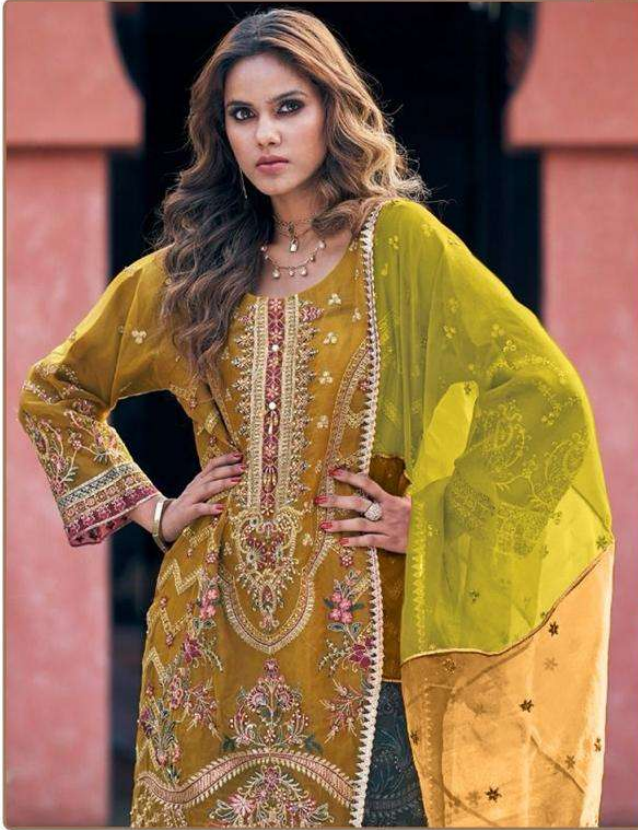
TOP- ORGENZA EMBROIDERY
BOTTOM - SILK STICH
DUPATTA - ORGENZA EMBROIDERY

Ⓟ DRY CLEAN ONLY.
ⓧ DO NOT USE ANY BLEACH OR STAIN REMOVING CHEMICAL.
Ⓡ IRON THE FABRIC AT MODERATE TEMPERATURE.



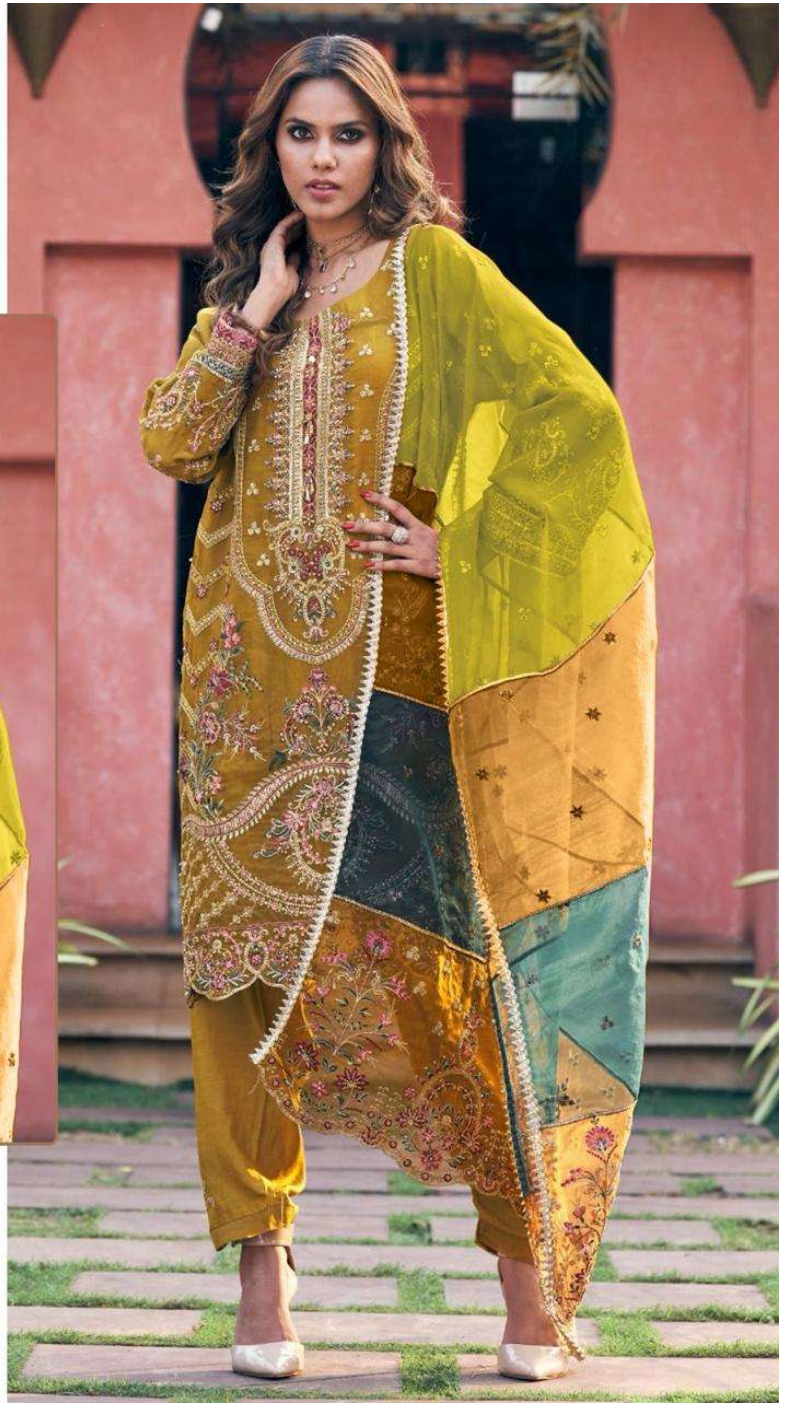


READYMAD
#R-1133-A



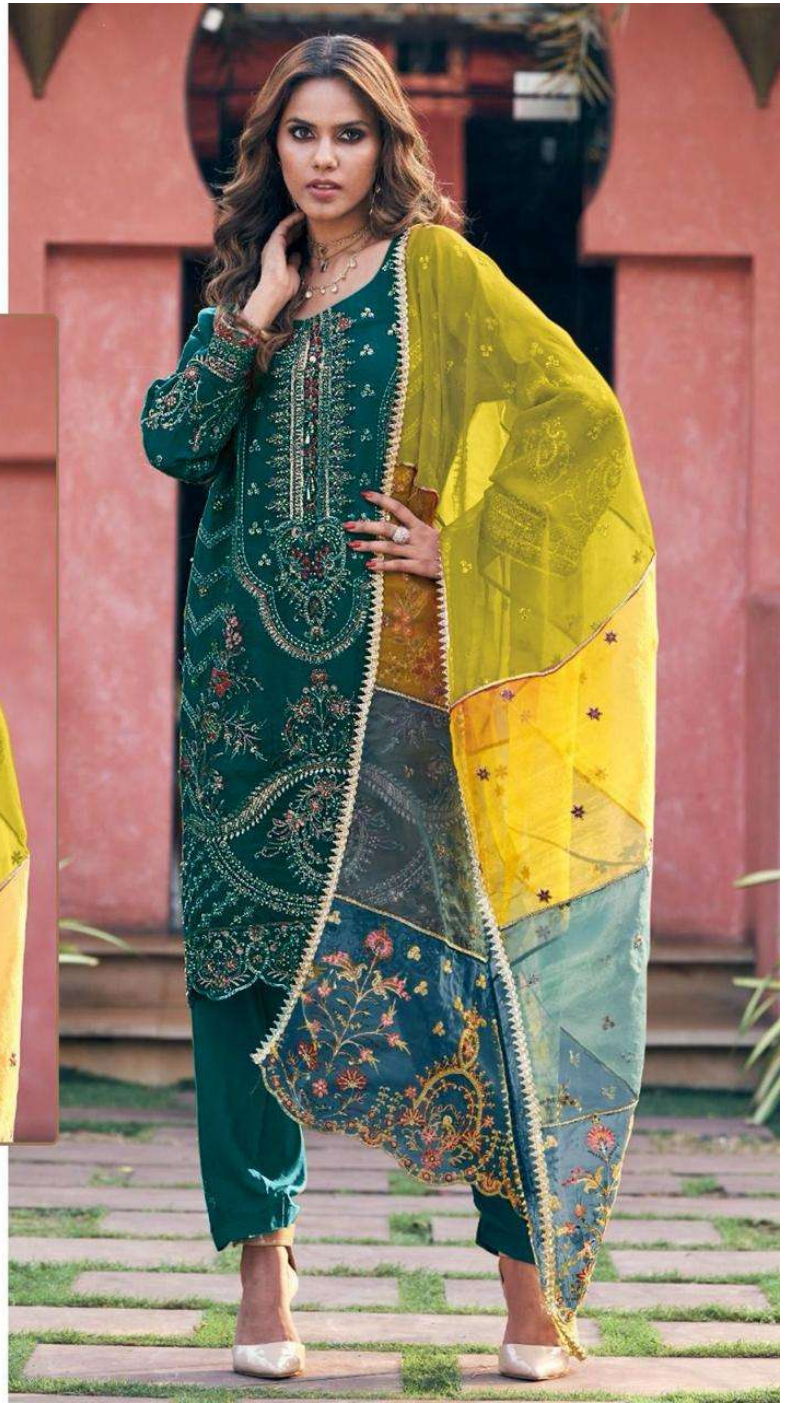
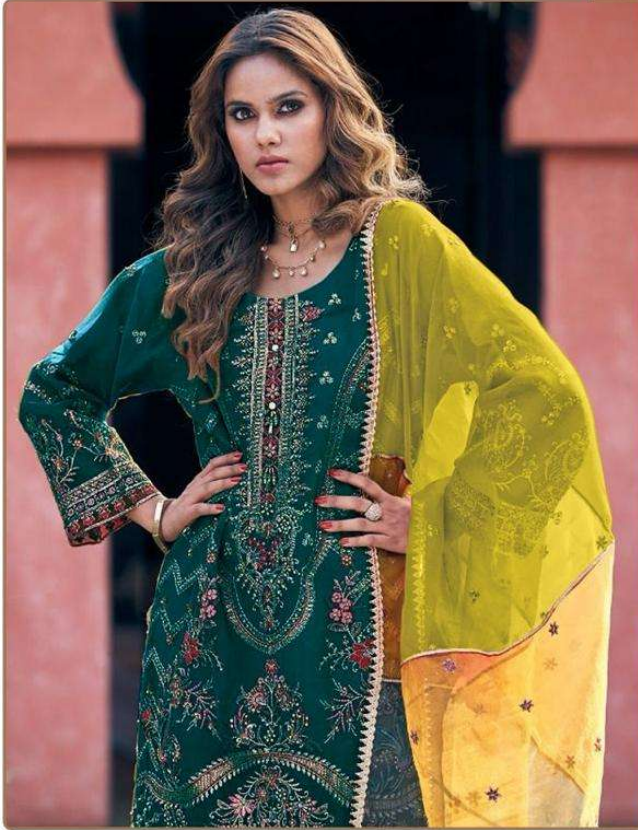
TOP- ORGENZA EMBROIDERY
BOTTOM - SILK STICH
DUPATTA - ORGENZA EMBROIDERY

Ⓟ DRY CLEAN ONLY.
ⓧ DO NOT USE ANY BLEACH OR STAIN REMOVING CHEMICAL.
Ⓡ IRON THE FABRIC AT MODERATE TEMPERATURE.





READYMAD
#R-1133-C

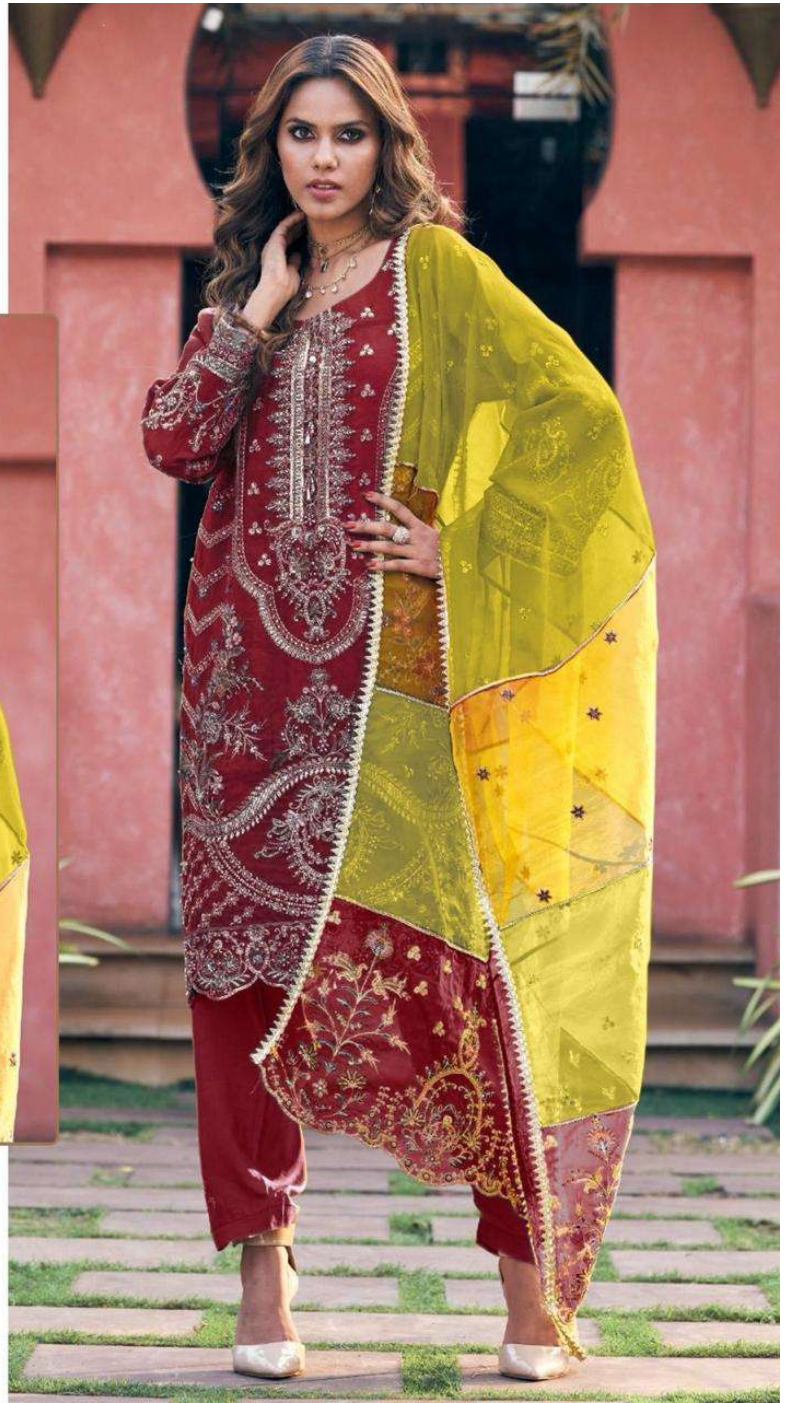
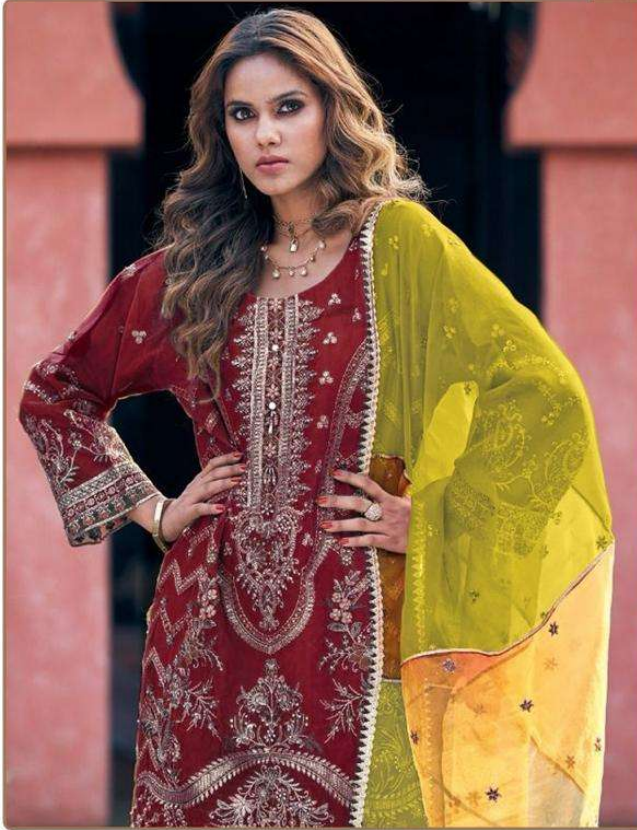


TOP- ORGENZA EMBROIDERY
BOTTOM - SILK STICH
DUPATTA - ORGENZA EMBROIDERY

Ⓟ DRY CLEAN ONLY.
ⓧ DO NOT USE ANY BLEACH OR STAIN REMOVING CHEMICAL.
Ⓡ IRON THE FABRIC AT MODERATE TEMPERATURE.

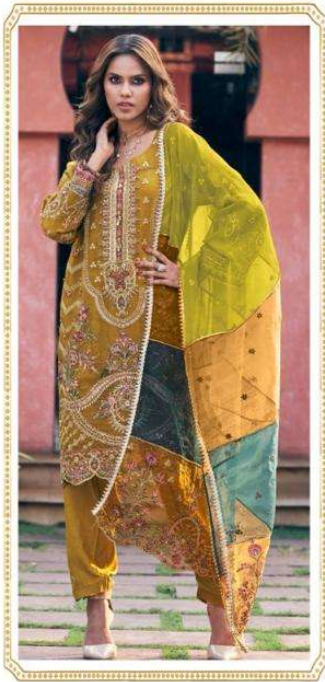


READYMAD
#R-1133-B

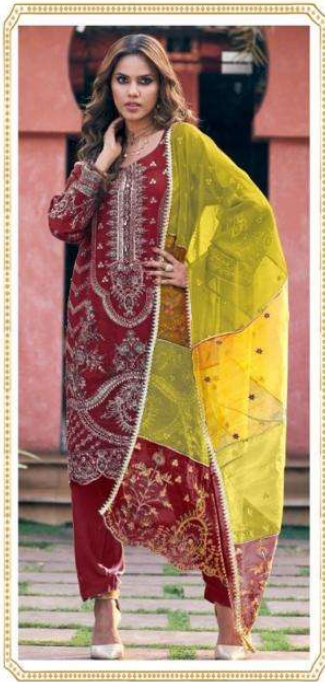


TOP- ORGENZA EMBROIDERY
BOTTOM - SILK STICH
DUPATTA - ORGENZA EMBROIDERY

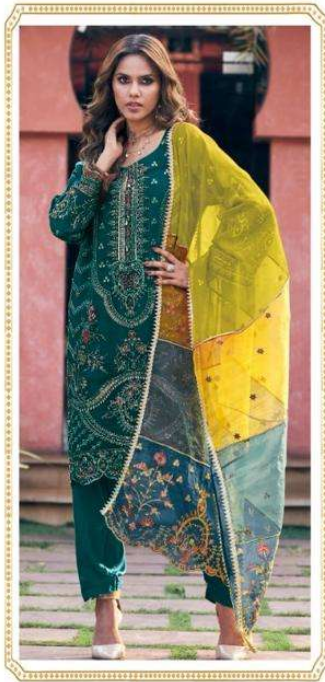
Ⓟ DRY CLEAN ONLY.
ⓧ DO NOT USE ANY BLEACH OR STAIN REMOVING CHEMICAL.
Ⓜ IRON THE FABRIC AT MODERATE TEMPERATURE.



#R-1133-A



#R-1133-B



#R-1133-C



#R-1133-D



READYMAD
#R-1133-D



TOP- ORGENZA EMBROIDERY
BOTTOM - SILK STICH
DUPATTA - ORGENZA EMBROIDERY

Ⓟ DRY CLEAN ONLY.
ⓧ DO NOT USE ANY BLEACH OR STAIN REMOVING CHEMICAL.
Ⓜ IRON THE FABRIC AT MODERATE TEMPERATURE.











