



MOHMANTHAN™



MAHOTSAV
GROUP

Majestica



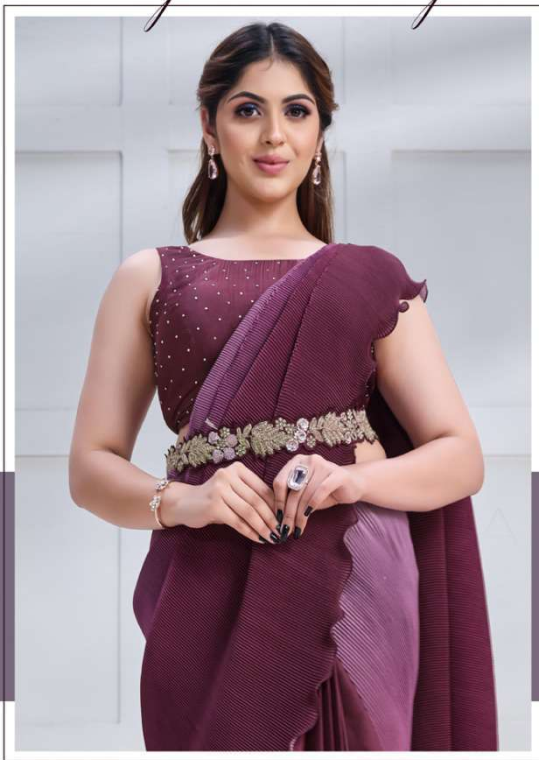
MOHMANTHAN™



MAHOTSAV
GROUP

Majestica

GET WRAPPED IN
Majestic Beauty



THIS
WINE-COL-
ORED SAREE
WITH A HINT
OF LIGHT
PURPLE
EXUDES
GRACE AND
CHARISMA.

FASHIONS FADE, STYLE IS ETERNAL
23508

FABRIC: CREPE SATIN SILK



MOHMANTHAN™



Majestica

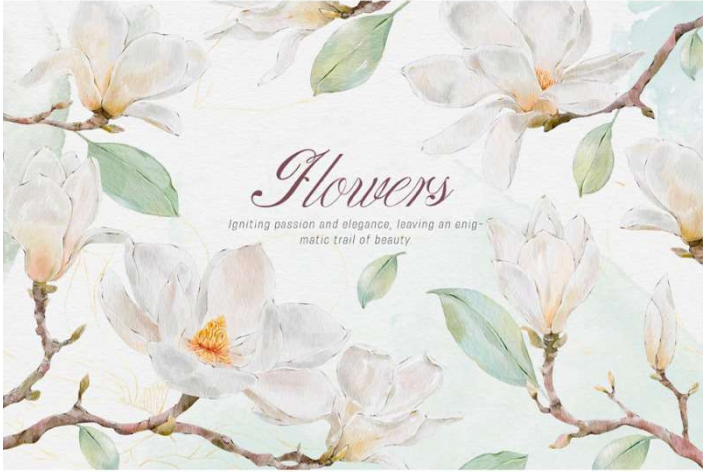
Unveiling the Inner
Majesty of Women.

Welcome to 'Majestica', where the essence of fashion is woven with threads of emotion and grace. In the realm of ethnic wear, women embody a unique majesty, a regal beauty that transcends time. Our catalog is a testament to this regality, a tribute to the elegant stories that every lady carries with her, etching her journey in the world of style.

Under the brand of Mohmanthan, this catalog, in every intricate design, every vibrant hue, we find the echoes of a woman's emotions, her cultural heritage, and her innate charm.

'Majestica' is a celebration of this inner majesty, a reflection of the strength, the grace, and the enduring beauty that defines her essence. Thus, 'Majestica' is not just a catalog; it's a journey into the majestic world of women's ethnic wear, where stories are spun, and beauty reigns supreme.








THE SERENE
AURA OF WINE
AND PURPLE
RADIATES A
COMMANDING
STYLE.

FASHION IS FADE, STYLE IS ETERNAL
23508

FABRIC: CREPE SATIN SILK



FABRIC: BANARASI CRUSH SILK



*A soft rephraser
of whispering dawn*

Intricate drapes ignite a graceful dance of allure and deep emotions.

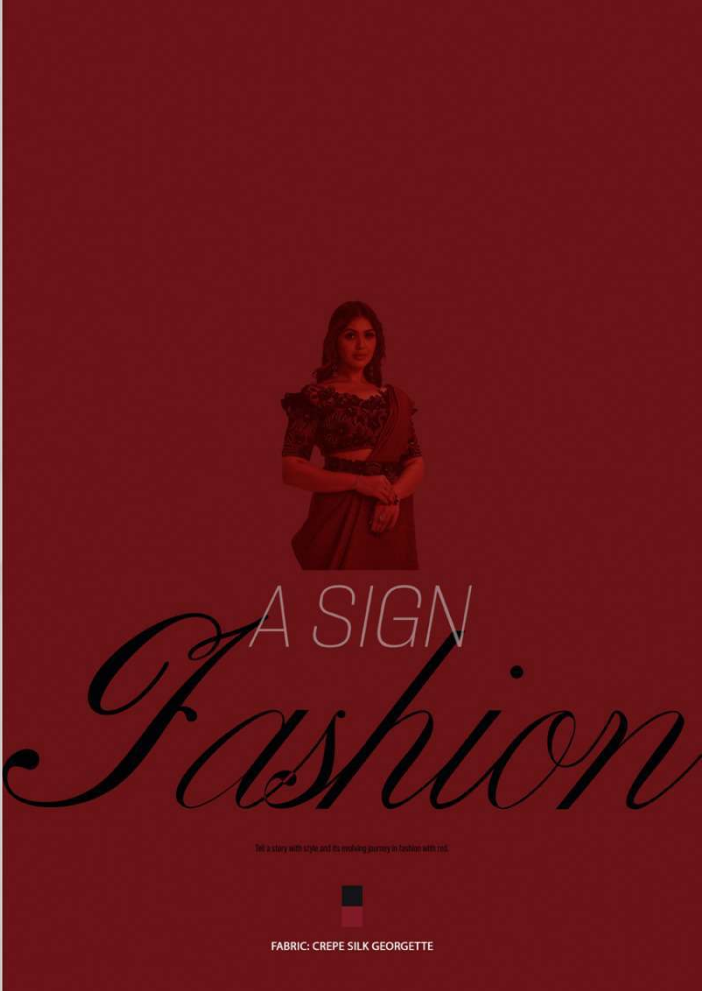




The art of capturing the soul
in radiant crepe satin silk

With fervent vibrancy, this saree leads us on a captivating voyage.







women make fashion
Culture

FABRIC: CREPE SATIN SILK



FABRIC: CREPE SATIN SILK

A Symphony in
Light of Palettes



NARRATE
YOUR STYLE
WITH CAPTI-
VATING
FASHION.

FASHIONS FADE, STYLE IS ETERNAL
23513

FABRIC: CREPE SATIN SILK



Discovering majestic
charm in the red

Join the timeless craftsmanship and style evolution with the red.



FASHIONS FADE, STYLE IS ETERNAL
23512

FABRIC: CREPE SILK GEORGETTE



Elegante

Beauty



ENTWINED
STYLE CELE-
BRATES
WOMEN'S
GRACE IN
YOUR
EVOLVING
RULES.

FASHION IS ETERNAL
23513

FABRIC: CREPE SATIN SILK



Draped in Tandem: Dual Sophistication Unveiled

Hold the dual essence of fashion and style, blending elegance with
charm, and sophistication with vibrant allure.



Be a Show Stopper
in *Delicate Hues*



These beautiful drapes shine not just with design but also with intricate smiles.



FASHION-MADE. STYLE IS ETERNAL.
23517

FABRIC: TUSSEER SILK

Shining Blue



A perfect wardrobe choice, where grace meets fashion, a feminist statement.



Your Style's Refined Melody.



FASHIONS MADE, STYLE IS ETERNAL
23516

FABRIC: CREPE SATIN SILK



Real *Growth*
IS Being More of Yourself

Fusing essence with earthy hues, it's an enduring charm.



*Gone with the shining blue,
a shade just made for you*



BLEND YOUR
PERSONA FOR
A HARMONI-
OUS POR-
TRAYAL OF
INNATE
CHARM.

FASHION'S FADE, STYLE IS ETERNAL
23518

FABRIC: CREPE SATIN SILK



FABRIC: PURE CREPE GEORGETTE

In this saree, fusion of style and impression leaves a lasting mark.

*The fervent allure of
rich brown shades.*



Fabric and elegance fuse, leaving a lasting impression in your style.



FASHIONS MADE, STYLE IS ETERNAL
23519

FABRIC: TWO TONE GEORGETTE SILK



PRETTY
Powerfull

Change the format, enter, and compete in a new sphere.

FABRIC: NET ORGANZA GEORGETTE





When Style Meets Impression:
A Beautiful Fusion.

Step into a world where style and impression fuse beauty harmoniously.



FASHIONS FACE, STYLE IS ETERNAL
23520

FABRIC: PURE CREPE GEORGETTE



23508



23510



23511



23512



23518



23519



23520



23521



23522



23513



23514



23515



23516



23517



MOHMANTHAN™

Majestica

WEAVING A
TALE OF
ARTISTRY, A
TOUCH OF
OPULENCE TO
TIMELESS
ELEGANCE.



It's her style's
turn to shine now

FASHIONS FADE, STYLE IS ETERNAL
23522

FABRIC: CREPE SATIN SILK

DESIGN NO	SAREE FABRIC	BLOUSE FABRIC	Saree WORK	Belt	CUSTZ.(SEMISTITCH/UN-STITCH)	BLOUSE SIZE
23508	Crepe satin silk	Satin Silk	Texture with Cord & Sequence Embroidered and Stone work	Available	stitched Blouse	up to 38 Inch with margin of 42 inch
23510	Crepe satin silk	Banglari Silk	Applique work with Cord, Sequence Embroidered & Stone Work	NA	stitched Blouse	up to 38 Inch with margin of 42 inch
23511	Banarasi Crush silk	Malai Satin	Sequence Embroidered with Stone work	NA	stitched Blouse	up to 38 Inch with margin of 42 inch
23512	Crepe Silk Georgette	Net	Texture with Cord, Sequence Embroidered & Stone work	Available	stitched Blouse	up to 38 Inch with margin of 42 inch
23513	Crepe satin silk	Satin Crepe Silk	Cord & Sequence Embroidered with Stone work	Available	stitched Blouse	up to 38 Inch with margin of 42 inch
23514	Crepe satin silk	Organza Silk	Cord & Sequence Embroidered with Applique & Stone work	NA	stitched Blouse	up to 38 Inch with margin of 42 inch
23515	Crepe satin silk	Organza Silk	Cord & Sequence Embroidered with Stone work	NA	stitched Blouse	up to 38 Inch with margin of 42 inch
23516	Crepe satin silk	Malai Satin	Cord & Sequence Embroidered with Stone work	NA	stitched Blouse	up to 38 Inch with margin of 42 inch
23517	Tusser Silk	Satin Crepe Silk	Cord & Sequence Embroidered with Stone work	NA	stitched Blouse	up to 38 Inch with margin of 42 inch
23518	Crepe satin silk	Organza Silk	Cord & Sequence Embroidered	NA	stitched Blouse	up to 38 Inch with margin of 42 inch
23519	Two Tone Georgette Silk	Malai Satin	Sequence Embroidered with Stone work	NA	stitched Blouse	up to 38 Inch with margin of 42 inch
23520	Pure Crepe Georgette	Banglari Silk	Cord & Sequence Embroidered with Stone work	NA	stitched Blouse	up to 38 Inch with margin of 42 inch
23521	Net Organza Georgette	Satin Crepe Silk	Cord & Sequence Embroidered	NA	stitched Blouse	up to 38 Inch with margin of 42 inch
23522	Crepe satin silk	Satin Crepe Silk	Cord & Sequence Embroidered with Stone work	NA	stitched Blouse	up to 38 Inch with margin of 42 inch