

A woman with long, wavy brown hair is seated on a dark metal chair. She is wearing a long-sleeved, purple dress with intricate gold embroidery and a matching purple shawl with a white polka-dot pattern. She is also wearing a gold necklace, a gold bracelet, and a ring. The background is a warm, orange-toned wall with a green base.

Stavan®

Pihu







In the 21st century the style trends of the fashion industry dominate the world more than they ever did, and control not only the way people dress but also trends in home ware design, makeup fashion and people's overall attitudes. In the 60s flower power did not only mean flares and tunics, it summed up the whole attitude of a generation, and this is even more prominent today.





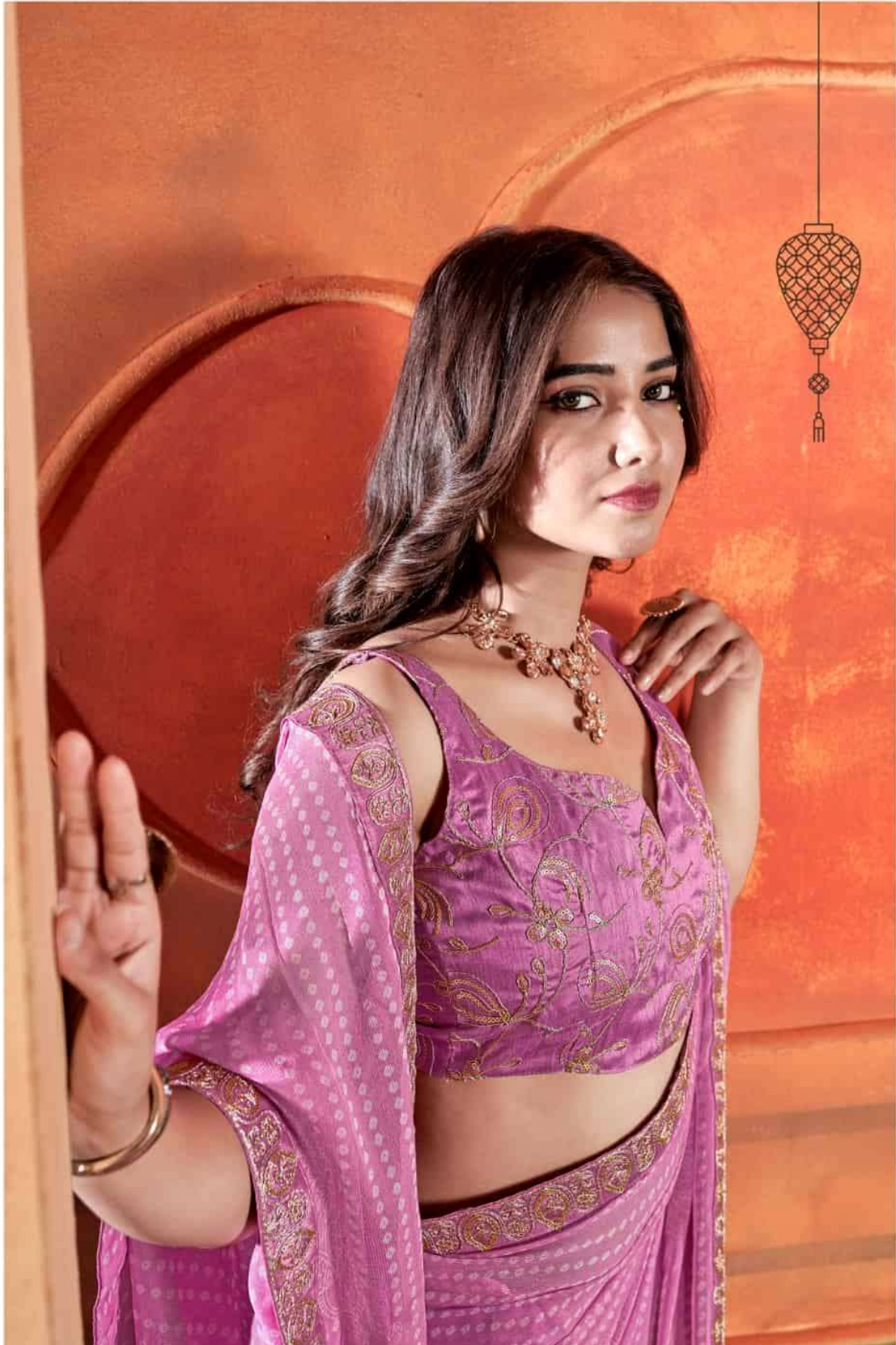




Queen In Style

In the 21st century the style trends of the fashion industry dominate the world more than they ever did, and control not only the way people dress but also trends in home ware design, makeup fashion and people's overall attitudes. In the 60s flower power did not only mean flares and tunics, it summed up the whole attitude of a generation, and this is even more pertinent today.







Queen In Style

In the 21st century the style trends of the fashion industry dominate the world more than they ever did, and control not only the way people dress but also trends in home ware design, makeup fashions and people's overall attitudes. In the 60s flower power did not only mean flowers and tunics, it summed up the whole attitude of a generation, and this is even more prominent today.

In the 21st century the style trends of the fashion industry dominate the world more than they ever did, and control not only the way people dress but also trends in home ware design, makeup fashion and people's overall attitudes. In the 60s flower power did not only mean flares and tunics, it summed up the whole attitude of a generation, and this is even more prominent today.

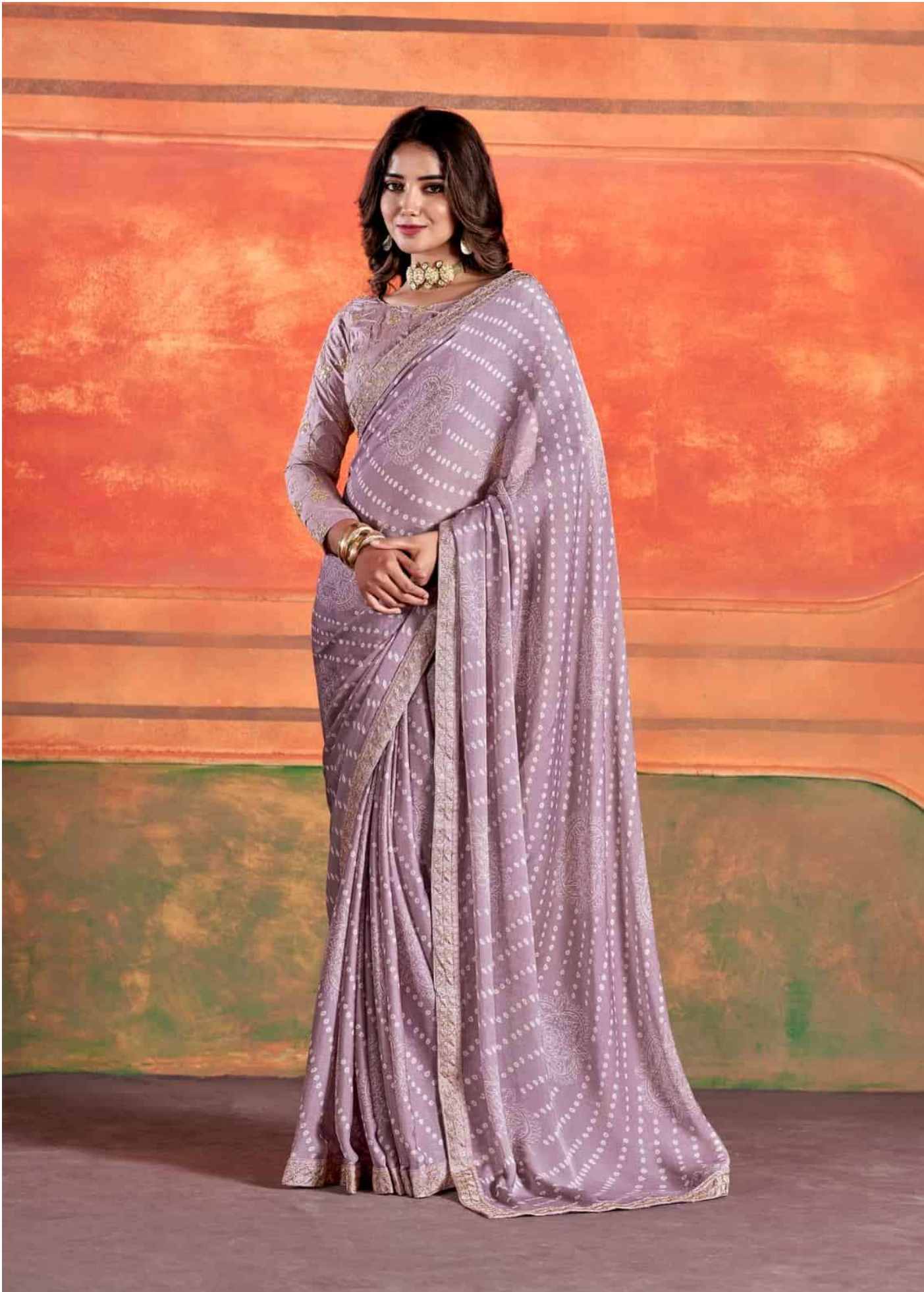






In the 21st century the style trends of the fashion industry dominate the world more than they ever did, and control not only the way people dress but also trends in home ware design, makeup fashion and people's overall attitudes. In the 60s flower power did not only mean flares and tunics, it summed up the whole attitude of a generation, and this is even more prominent today.













101



102



103



106



107



108



104



105



109



110



A woman with long, wavy brown hair is seated on a dark metal chair. She is wearing a purple long-sleeved top and a matching skirt, both featuring intricate gold embroidery and a white polka-dot pattern. A wide, patterned purple sash is draped over her shoulders. She is also wearing a large, ornate gold necklace and a matching wide gold bracelet. The background is a warm, orange-toned wall with a green base.

Stavan®

Pihu