



VARSHA

# THE PORTRAIT

COLLECTION






VARSHA

# THE PORTRAIT

COLLECTION



A woman with dark hair styled in a bun stands against a textured, warm-toned wall. She is wearing a long-sleeved, floor-length green dress with intricate gold and yellow embroidery around the neckline and cuffs. A long, flowing train with a green and gold pattern extends from the back of the dress onto the floor. She is also wearing a matching patterned shawl draped over her shoulders. The floor is made of light-colored tiles, and a potted plant is visible on the right side of the frame.

Fuel your ethnic love with  
embroidery and print detailed  
dress and make your wardrobe  
worth investment!

PC-01



## A timeless wardrobe

Fuel your ethnic love with embroidery and print detailed  
dress and make your wardrobe worth investment!








## Shine on

This festive season shine on with the newest trend;  
adorn these dresses with eternal grace!



A woman with dark hair is standing in a dark arched doorway set into a reddish-brown wall. She is wearing a long-sleeved yellow kurta with a green velvet collar and cuffs, featuring delicate floral embroidery. A green and yellow patterned shawl is draped over her shoulders. She is also wearing yellow trousers and green velvet mules. Her hands are clasped in front of her, and she is looking off to the side.

Minimal and delicate work  
detail lends you an  
elegant and urbane look  
to astonish occasion.

PC-02








If admire pastel colours,  
you can effortlessly relate to  
soothing hues which are  
anything but a clothing treat!

PC-03

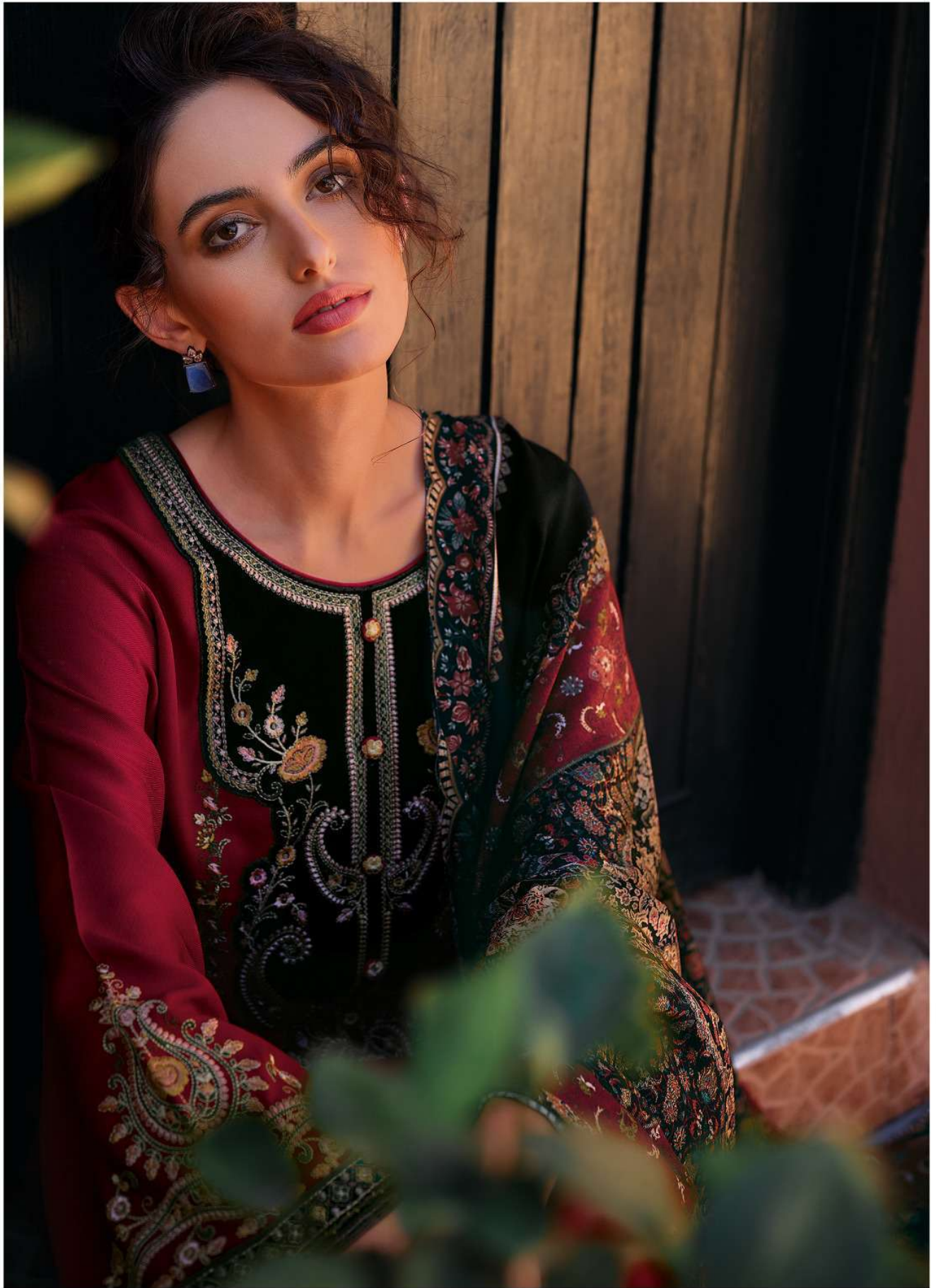




A woman with dark, curly hair is standing in front of a large, black, vertically-slatted door. She is wearing a long, flowing red dress with a black panel on the front featuring intricate gold and green embroidery. A long, patterned shawl in red, black, and gold is draped over her left shoulder and arm. She is also wearing colorful, patterned shoes. The background is a plain, light-colored wall, and the floor is made of light-colored tiles.

When you see this dress,  
be assured, it would be  
the perfect statement  
piece in the look book.

PC-04





## The trendiest showcase

When you see this dress, be assured,  
it would be the perfect statement  
piece in the look book.



---

Be the trendsetter



Break stereotypes, set your own rules and be the trendsetter.

---



VARSHA

# THE PORTRAIT COLLECTION



PC-01



PC-02



PC-03



PC-04



VARSHA

DESIGN	PRICE	DESCRIPTION
PC - 01	2280/-	TOP PASHMINA SILK SOLID WITH EMBROIDERED VELVET PATCHES FOR FRONT, AND BORDERS WITH EXTRA EMBROIDERED SLEEVES.
PC - 02	2280/-	-
PC - 03	2280/-	DUPATTA PASHMINA SILK DIGITALLY PRINTED.
PC - 04	2280/-	-
		BOTTOM PASHMINA SILK SOLID WITH BORDERS.

**TOTAL AMOUNT : 9,120/- + GST**

**TOTAL PIECES : 4**

