

**TOP- ORGENZA PEDING WITH EMBROIDERY  
WITH CUT WORK**

**M-241-C**

**INER- PEDING SANTOON**

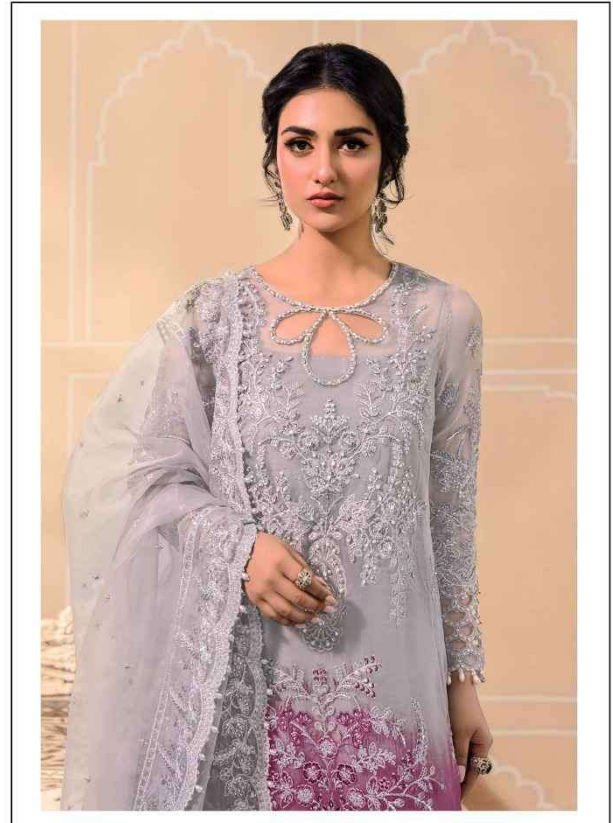
**BOTTOM- SANTOON**

**DUPATTA- PEDING BUTTERFLY NET WITH  
EMBROIDERY WORK**

**☐ DRY CLEAN ONLY.**

**✗ DO NOT USE ANY BLEACH OR STAIN REMOVING CHEMICAL.**

**☐ IRON THE FABRIC AT MODERATE TEMPERATURE.**



**TOP- ORGENZA PEDING WITH EMBROIDERY  
WITH CUT WORK**

**M-241-C**

**INER- PEDING SANTOON**

**BOTTOM- SANTOON**

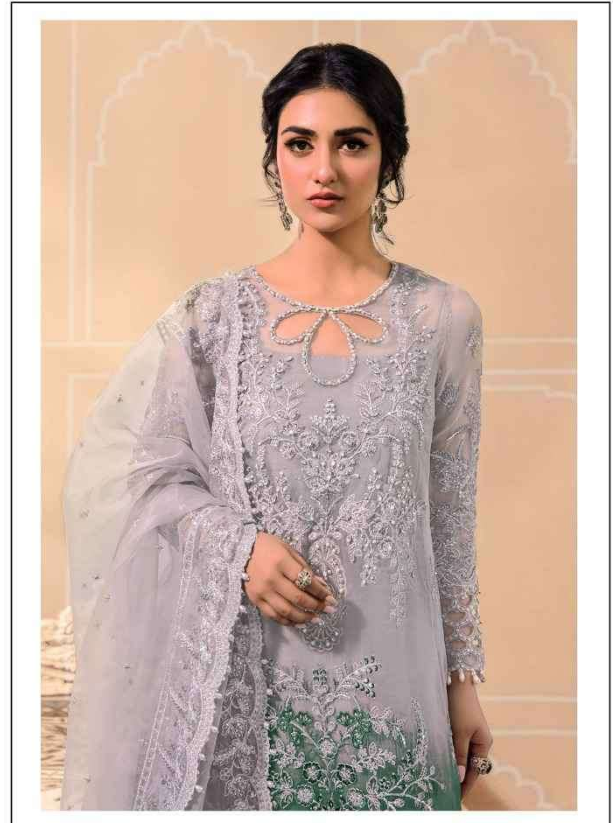
**DUPATTA- PEDING BUTTERFLY NET WITH  
EMBROIDERY WORK**

**☐ DRY CLEAN ONLY.**

**✗ DO NOT USE ANY BLEACH OR STAIN REMOVING CHEMICAL.**

**☐ IRON THE FABRIC AT MODERATE TEMPERATURE.**





**TOP- ORGENZA PEDING WITH EMBROIDERY  
WITH CUT WORK**

M-241-A

**INER- PEDING SANTOON**

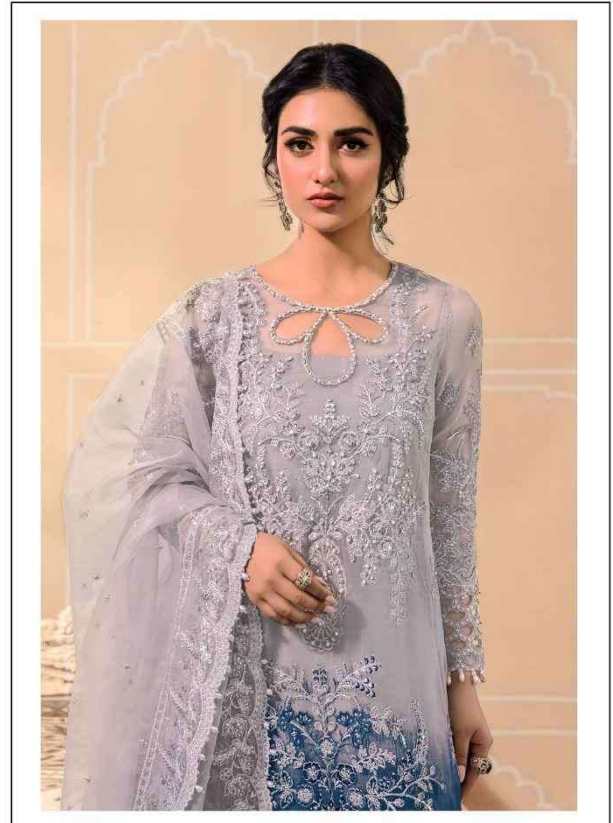
**BOTTOM- SANTOON**

**DUPATTA- PEDING BUTTERFLY NET WITH  
EMBROIDERY WORK**

☐ DRY CLEAN ONLY.

✂ DO NOT USE ANY BLEACH OR STAIN REMOVING CHEMICAL.

☐ IRON THE FABRIC AT MODERATE TEMPERATURE.



**TOP- ORGENZA PEDING WITH EMBROIDERY  
WITH CUT WORK**

**M-241-D**

**INER- PEDING SANTOON**

**BOTTOM- SANTOON**

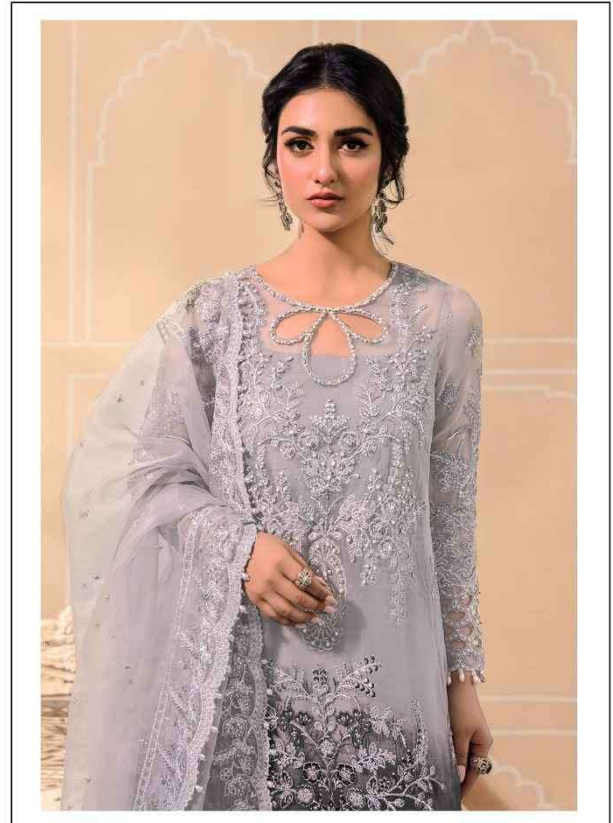
**DUPATTA- PEDING BUTTERFLY NET WITH  
EMBROIDERY WORK**

**☐ DRY CLEAN ONLY.**

**✖ DO NOT USE ANY BLEACH OR STAIN REMOVING CHEMICAL.**

**☐ IRON THE FABRIC AT MODERATE TEMPERATURE.**





**TOP- ORGENZA PEDING WITH EMBROIDERY  
WITH CUT WORK**

**M-241-B**

**INER- PEDING SANTOON**

**BOTTOM- SANTOON**

**DUPATTA- PEDING BUTTERFLY NET WITH  
EMBROIDERY WORK**

**☐ DRY CLEAN ONLY.**

**✖ DO NOT USE ANY BLEACH OR STAIN REMOVING CHEMICAL.**

**☐ IRON THE FABRIC AT MODERATE TEMPERATURE.**



