



be RICH

Vol. 3





be RICH

Vol. 3



A woman with long brown hair, wearing a sleeveless pink dress with a large floral pattern, is smiling and waving her right hand. She is standing in front of a large, vibrant pink bougainvillea plant. The background is a light blue sky and a white wall with a blue geometric pattern. The overall mood is bright and cheerful.

Extreme Beauty

leave the
ordinary
behind &
go stylish

f *asshion*
Fades

Fashion fades,
only style remains
the same



BR 301



SWISH
•INSPIRED BY FASHION•



BR 302



BR 303

R Mood
Effect

Special occasions
need special attires



A woman with long dark hair is smiling and standing in a garden. She is wearing a sleeveless, knee-length dress with a purple base and white floral patterns. The dress has a decorative lace-like detail at the waist. She is also wearing light-colored sandals. She is standing on a light-colored tiled floor next to a white wall. Above her, there are pink flowers hanging from a trellis. The background is a clear blue sky.

SWISH
INSPIRED BY FASHION

Being
Classy
Being classy
isn't a choice
Its a lifestyle

BR 304



SWISH®
INSPIRED BY FASHION

m *Magical mystery*

Style is a way to say
who you are without
having to speak



BR 305



Trend
Alert
Flow with
fresh trends





SWISH
INSPIRED BY FASHION

BR 306



ARROGANT

Style

Being classy
isn't a choice
Its a lifestyle



BR 307



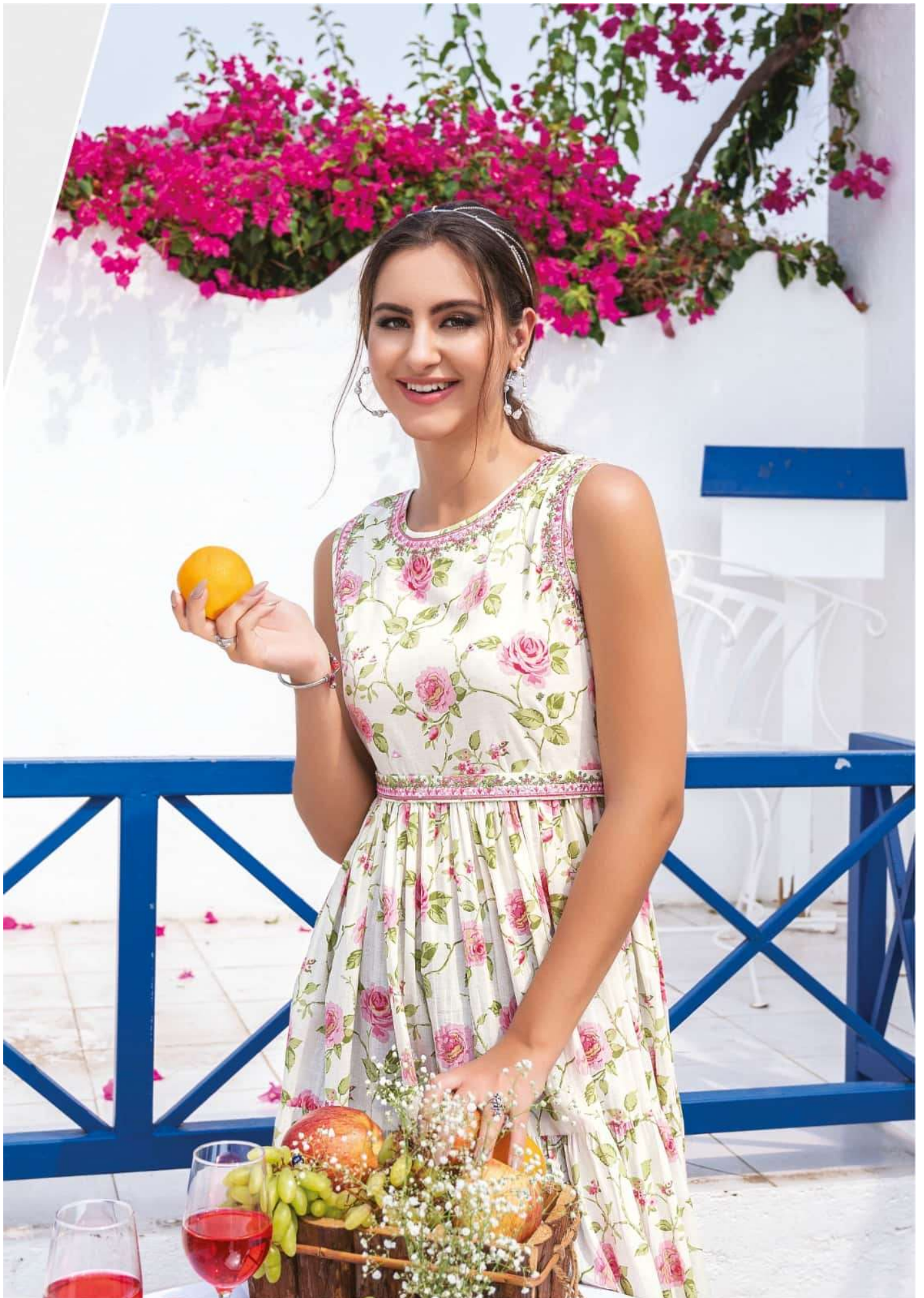
SWISH®
•INSPIRED BY FASHION•

be

RICH

Vol.3







BR 301



BR 302



BR 303



BR 304



BR 305



BR 306



BR 307