

ॐ bhkala

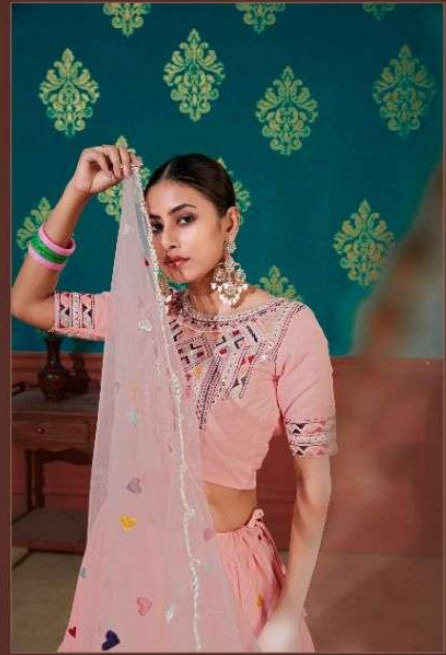


Girly
Vol. 15

ॐ bhkala



Girly
Vol. 15



 **bhkala**

IMMENSE ROYALTY

1671



bhkala

1671

It's Written in time beauty is beyond
Every Wordly Desire it is simple
it is the Trendz that every and
this collection of Lahenga is a Reflection



Shikha



MESMERIZING 1672 BLISS





 bhkala

a Masterfully Embroidered Shift, Exotically
Patterned Dupatta with Sophisticated Plain
Designs Season is all about Celebration.

1672



bhkala

PERFECT FAIRYTALE

1673



bhkala

Bright Colour is one of the Strongest Fashion statement of the
Season and Blod Fashion a more Ethereal and Exotic Effect

1673





bhkala

VINTAGE LAVISH

1674



Moving with Silky Grace your Elegance
will be clear for all to Behold and
Enjoy Celebrate your Delicate Side
with the Exisite Indian Volle Collection.

Exisite bhkala

1674

Design NO. (SKU)	Main Color	Lehenga Fabric	Choli Fabric	Dupatta Fabric	Size (Semi-Stitched)	Lehenga Work	Choli Work	Dupatta Work	Choli Length MTR	Lehenga Length MTR	Dupatta Length MTR	Weight
1671	Peach	Cotton	Cotton	NET	UPTO 42 BUST AND WAIST	Thread Embroidered	Thread with Sequence Embroidered	Thread with Sequence Embroidered	1 MTR	42 INCH	2.30 MTR	1.5 KG
1672	Sky - Blue	Cotton	Cotton	NET	UPTO 42 BUST AND WAIST	Thread Embroidered	Thread with Sequence Embroidered	Thread with Sequence Embroidered	1 MTR	42 INCH	2.30 MTR	1.5 KG
1673	Navy Blue - Pink	Silk	Imported Furr fabric	Silk	UPTO 42 BUST AND WAIST	Printed Work	Sequence Embroidered	Printed Work	0.5 MTR	42 INCH	2.30 MTR	1.5 KG
1674	Black - Grey	Silk	Imported Furr fabric	Silk	UPTO 42 BUST AND WAIST	Printed Work	Sequence Embroidered	Printed Work	0.5 MTR	42 INCH	2.30 MTR	1.5 KG

THIS BOOK / CATALOGUE / LOGO / ARE PROTECTED UNDER COPYRIGHT ACT.
 AN ILLEGAL/UNAUTHORIZED REPRINT, PUBLISHING, REPRODUCTION, DISTRIBUTION AND MODIFICATION OF ANY IMAGES, PHOTOGRAPHS AND PRODUCTCS,
 TOTALLY OR IN PART, FOR ANY PURPOSE, REASON OR CAUSE IS STRICTLY PROHIBITED AND PUNISHABLE UNDER LAW.



1671



1672



1673



1674