

Fepic®

Rosemeen®

trends

D.NO.91018



Fepic®

Rosemeen®

trends

D.NO.91018



Fepic®
Rosemeen®
trends



our elegant collection and fashion
define true quintessence in women

D.NO.91019



Fepic®

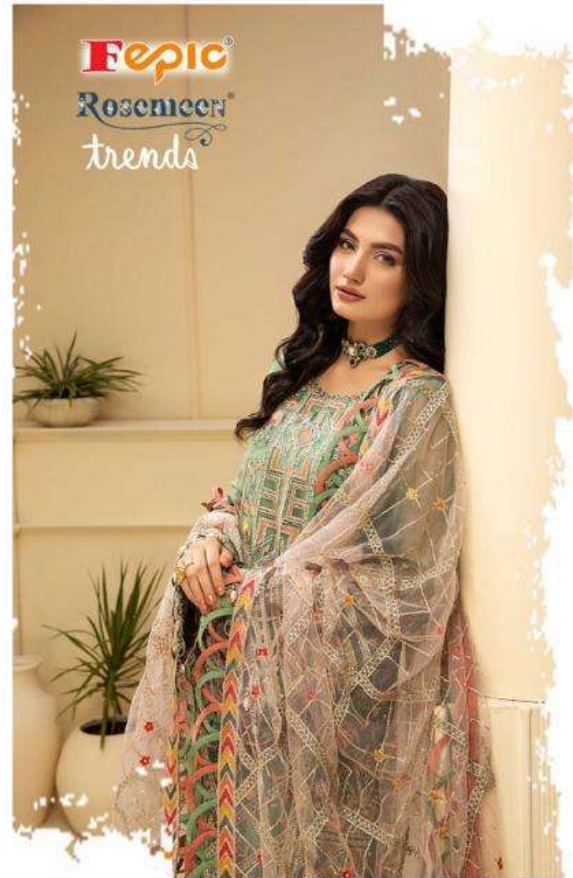


WASHING INSTRUCTIONS

DO NOT USE ANY TYPE OF BLEACH OR STAIN REMOVING CHEMICALS
BEFORE CUTTING / STITCHING, FABRIC SHOULD BE SOAKED IN WATER
(ALL COMPONENTS SEPARATELY) FOR 15 MINUTES
DO NOT KEEP WET FABRIC IN TWISTED FORM IN ORDER TO AVOID COPY MARKS |
WASH COLOURED AND WHITE FABRICS SEPARATELY
IRON CLOTHES AT MODERATE TEMPERATURE | DO NOT DRY FABRIC IN DIRECT SUNLIGHT
(EXTRA LACES, HANGINGS AND ACCESSORIES ARE NOT INCLUDED)

Rosemeen®
trends
D.NO.91018





D.NO.91016

Fepic®



Rosemeen®
trends



D.NO.91017



Fepic®
Rosemeen®
trends



Fepic®



WASHING INSTRUCTIONS

DO NOT USE ANY TYPE OF BLEACH OR STAIN REMOVING CHEMICALS
BEFORE CUTTING / STITCHING, FABRIC SHOULD BE SOAKED IN WATER
(ALL COMPONENTS SEPARATELY) FOR 15 MINUTES
DO NOT KEEP WET FABRIC IN TWISTED FORM IN ORDER TO AVOID COPY MARKS |
WASH COLOURED AND WHITE FABRICS SEPARATELY
IRON CLOTHES AT MODERATE TEMPERATURE | DO NOT DRY FABRIC IN DIRECT SUNLIGHT
(EXTRA LACES, HANGINGS AND ACCESSORIES ARE NOT INCLUDED)

Rosemeen®
trends
D.NO.91016



Fepic®



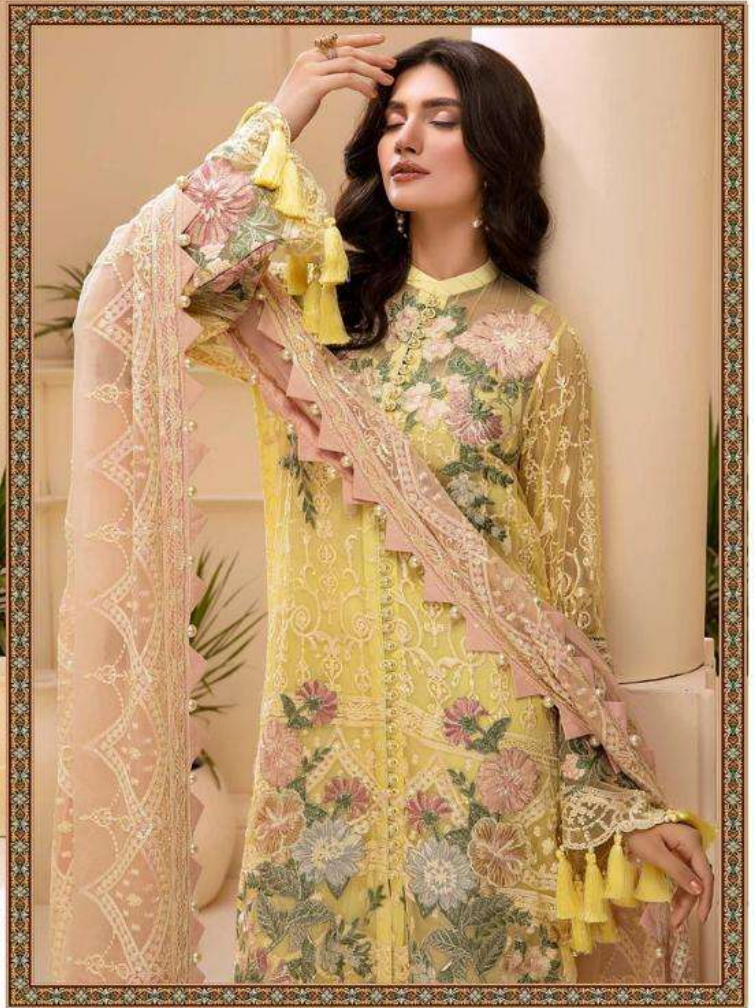
WASHING INSTRUCTIONS

DO NOT USE ANY TYPE OF BLEACH OR STAIN REMOVING CHEMICALS
BEFORE CUTTING / STITCHING, FABRIC SHOULD BE SOAKED IN WATER
(ALL COMPONENTS SEPARATELY) FOR 15 MINUTES
DO NOT KEEP WET FABRIC IN TWISTED FORM IN ORDER TO AVOID COPY MARKS |
WASH COLOURED AND WHITE FABRICS SEPARATELY
IRON CLOTHES AT MODERATE TEMPERATURE | DO NOT DRY FABRIC IN DIRECT SUNLIGHT
(EXTRA LACES, HANGINGS AND ACCESSORIES ARE NOT INCLUDED)

Rosemeen®
trends
D.NO.91019



Fepic®



WASHING INSTRUCTIONS

DO NOT USE ANY TYPE OF BLEACH OR STAIN REMOVING CHEMICALS
BEFORE CUTTING / STITCHING, FABRIC SHOULD BE SOAKED IN WATER
(ALL COMPONENTS SEPARATELY) FOR 15 MINUTES
DO NOT KEEP WET FABRIC IN TWISTED FORM IN ORDER TO AVOID COPY MARKS |
WASH COLOURED AND WHITE FABRICS SEPARATELY
IRON CLOTHES AT MODERATE TEMPERATURE | DO NOT DRY FABRIC IN DIRECT SUNLIGHT
(EXTRA LACES, HANGINGS AND ACCESSORIES ARE NOT INCLUDED)

Rosemeen®
trends
D.NO.91017




D.NO	TOP	DUPATTA	BOTTOM	CP
91016	BUTTER FLY NET EMBROIDERED WITH HAND WORK	BUTTER FLY NET EMBROIDERED	DULL SANTOON	1220
91017	BUTTER FLY NET EMBROIDERED WITH HAND WORK	BUTTER FLY NET EMBROIDERED	DULL SANTOON	1220
91018	FAUX GEORGETTE EMBROIDERED WITH HAND WORK	BUTTER FLY NET EMBROIDERED	DULL SANTOON	1299
91019	FAUX GEORGETTE EMBROIDERED WITH HAND WORK	NAZMEEN EMBROIDERED	DULL SANTOON	1299
				AVARAGE - 1259

Fepic[®]

Rosemeen[®]
trends

 :_Fepic

 :Fb.com/Fepic11



D.NO.91016



D.NO.91017



D.NO.91018



D.NO.91019

Fepic

Rosemeen
trends

Instagram: Fepic

Facebook: Fb.com/Fepic11

