



Fepic®

SANA SAFINAZ

LUXURY LIGHT



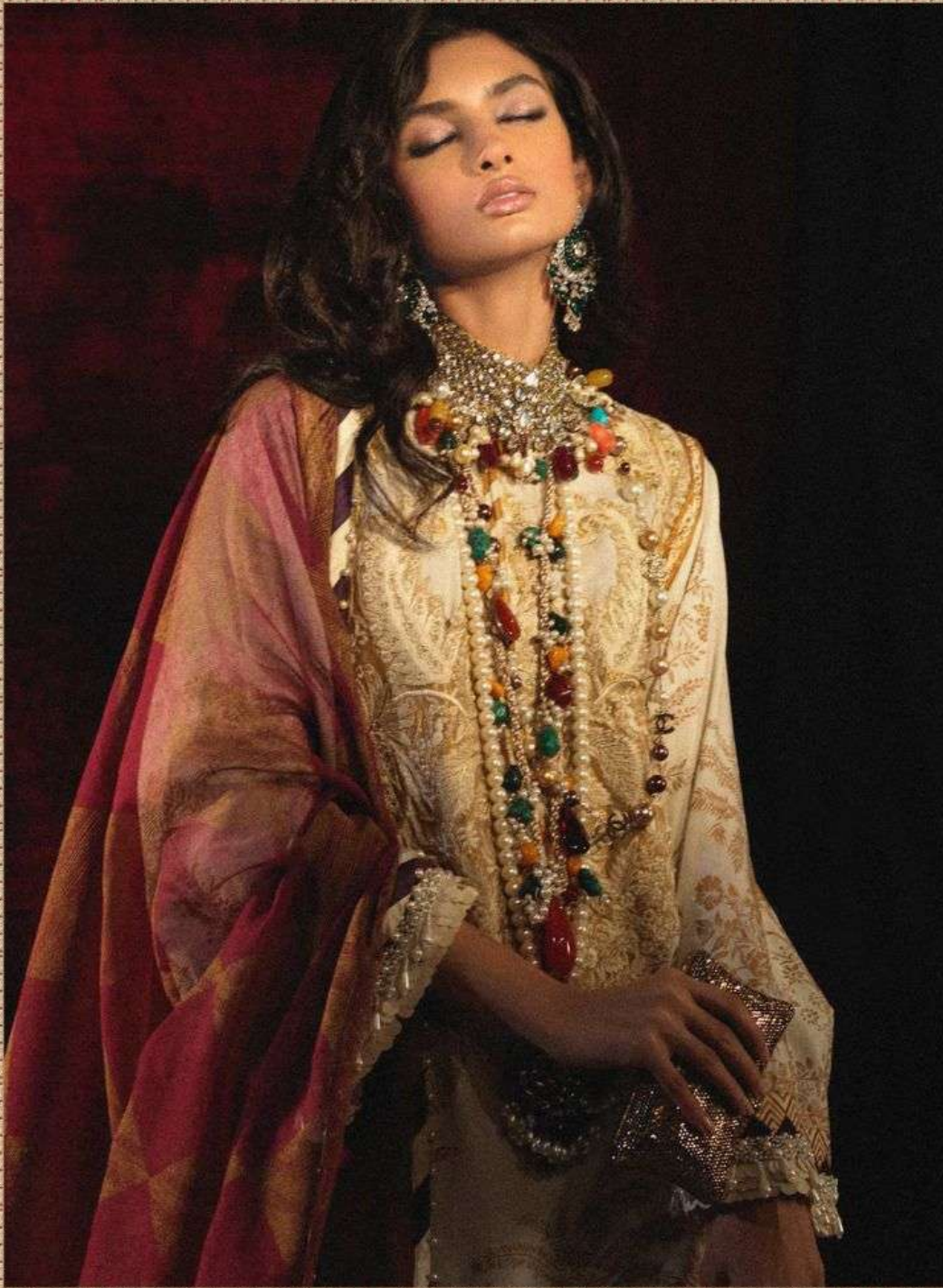
Fepic®

SANA SAFINAZ

LUXURY LIGHT



Fepic®



**SANA SAFINAZ**  
*LUXURY LIGHT*



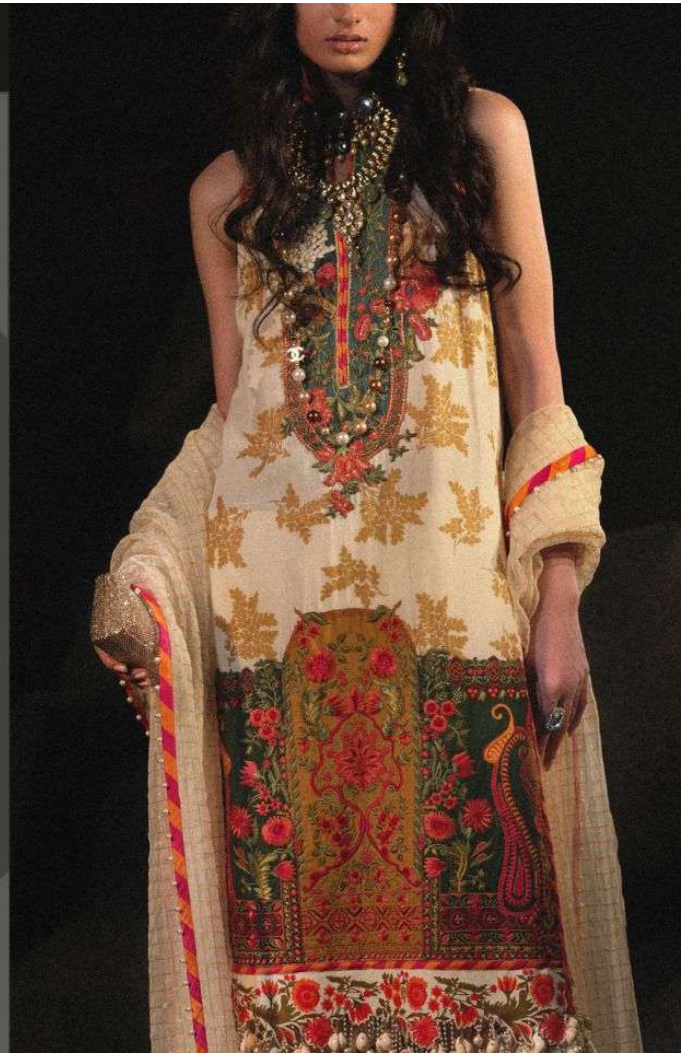


**Fepic®**

**SANA SAFINAZ**  
*LUXURY LIGHT*

 [\\_Fepic](#)  [:Fb.com/Fepic11](#)

D.NO.43021



The logo for Fepic, featuring the brand name in a stylized font with a registered trademark symbol.

SANA SAFINAZ

LUXURY LIGHT

Instagram: Fepic Facebook: Fb.com/Fepic11

D.NO.43018





**Fepic®**

**SANA SAFINAZ**

*LUXURY LIGHT*

 \_Fepic  :fb.com/Fepic11

D.NO.43019

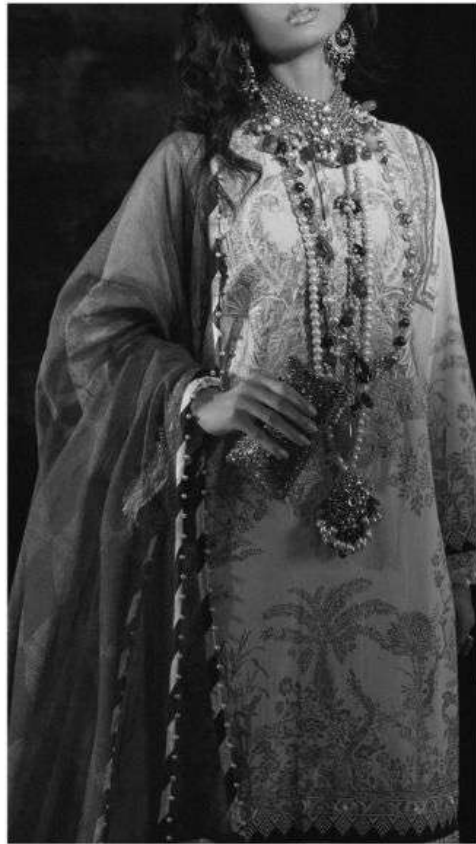




**Epic®**

D.NO.43015







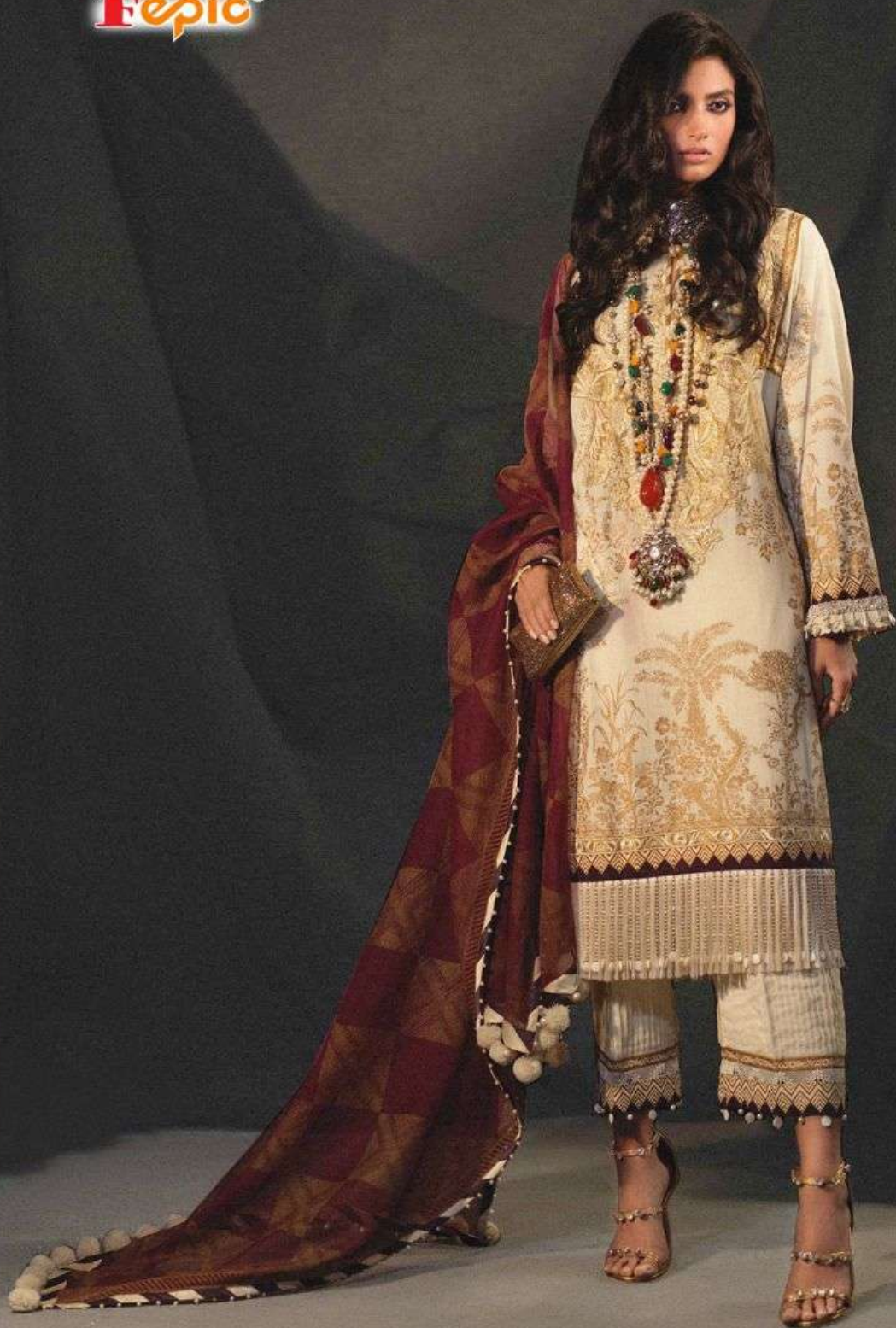
Fepic®



D.NO.43018



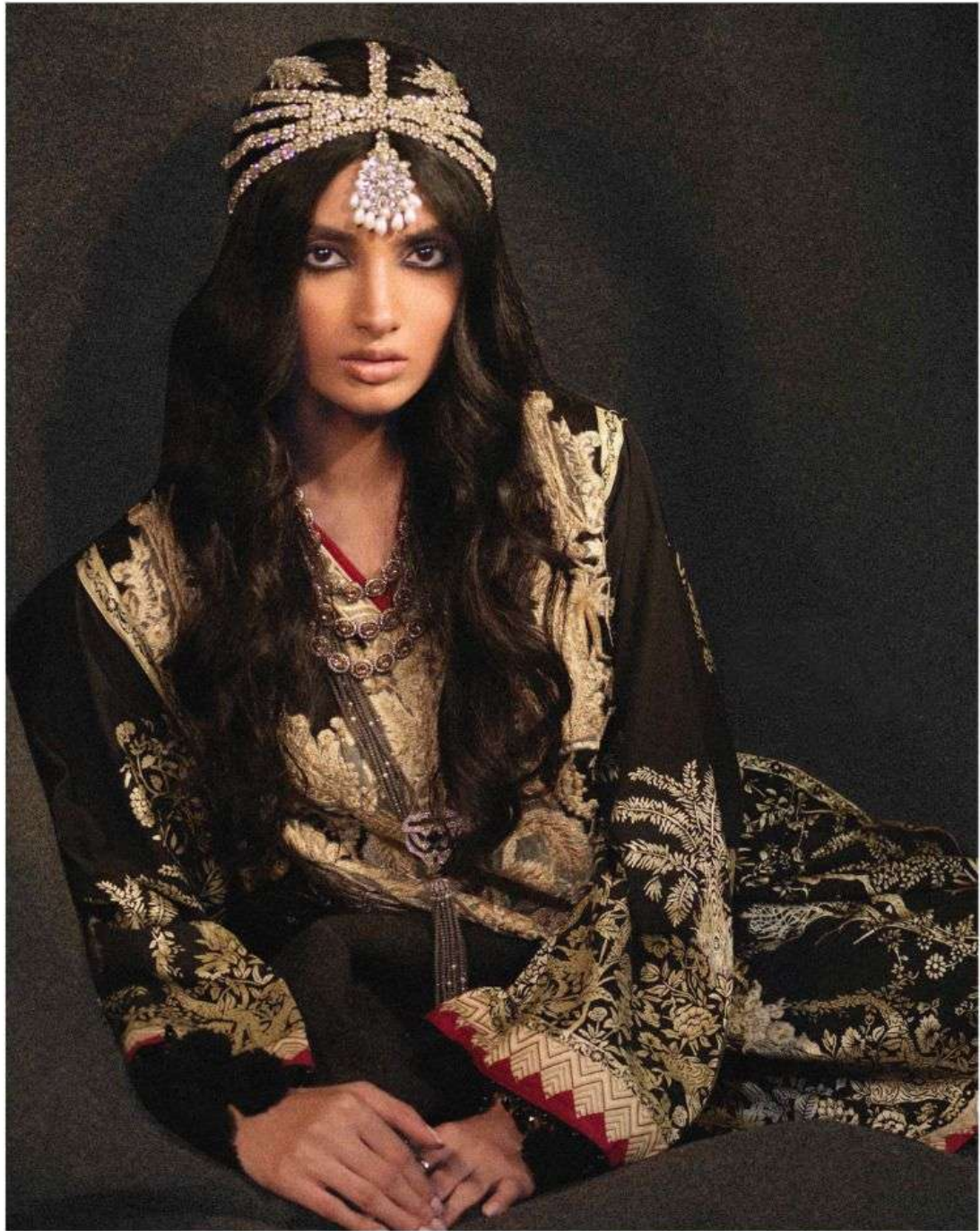
**Fepic®**



D.NO.43017



IS ABOUT TO CHANGE





**Epic®**



D.NO.43019

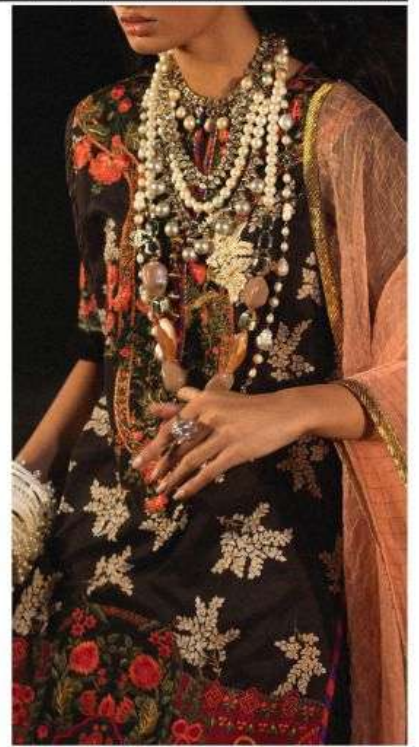
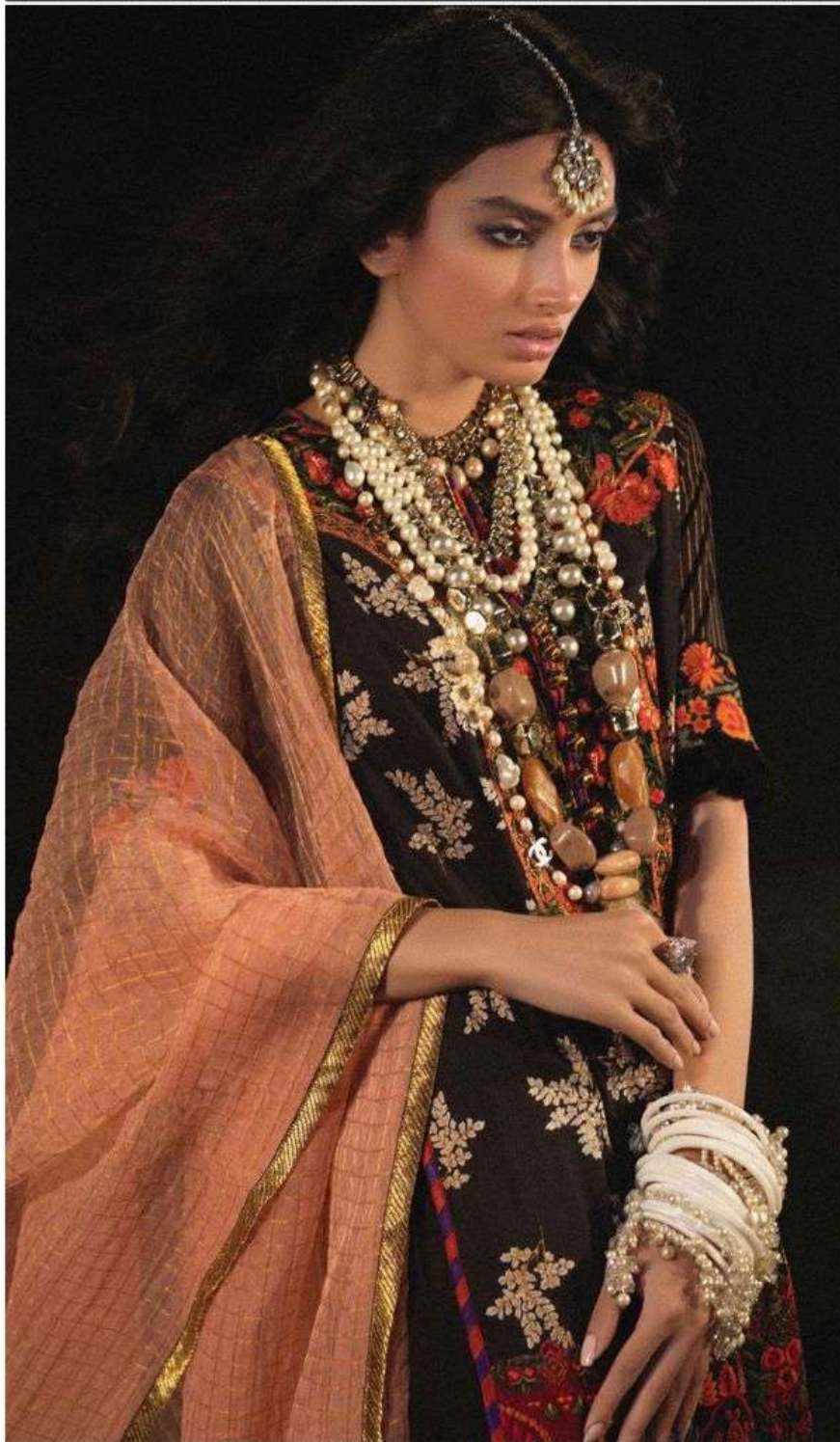


**Fepic®**



D.NO.43020





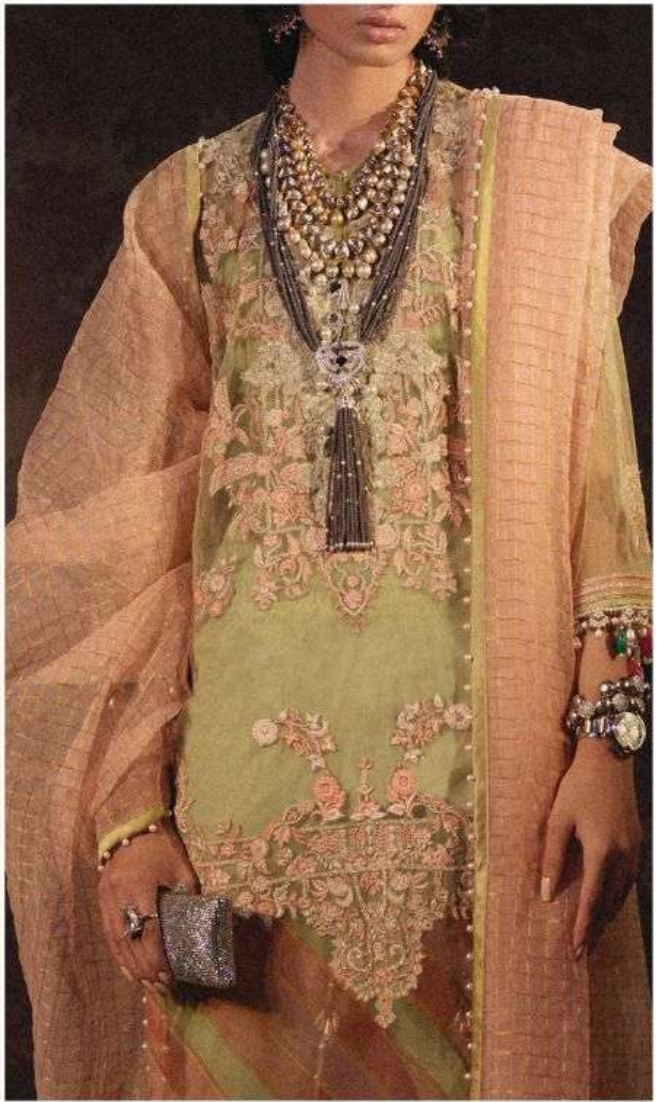


**Fepic®**



◆ D.NO.43022 ◆







Fepic®



D.NO.43021





Turn every head your way as you stroll across  
in an outfit from the new ethnic collection celebrate  
your classy side with this perfect for chic style









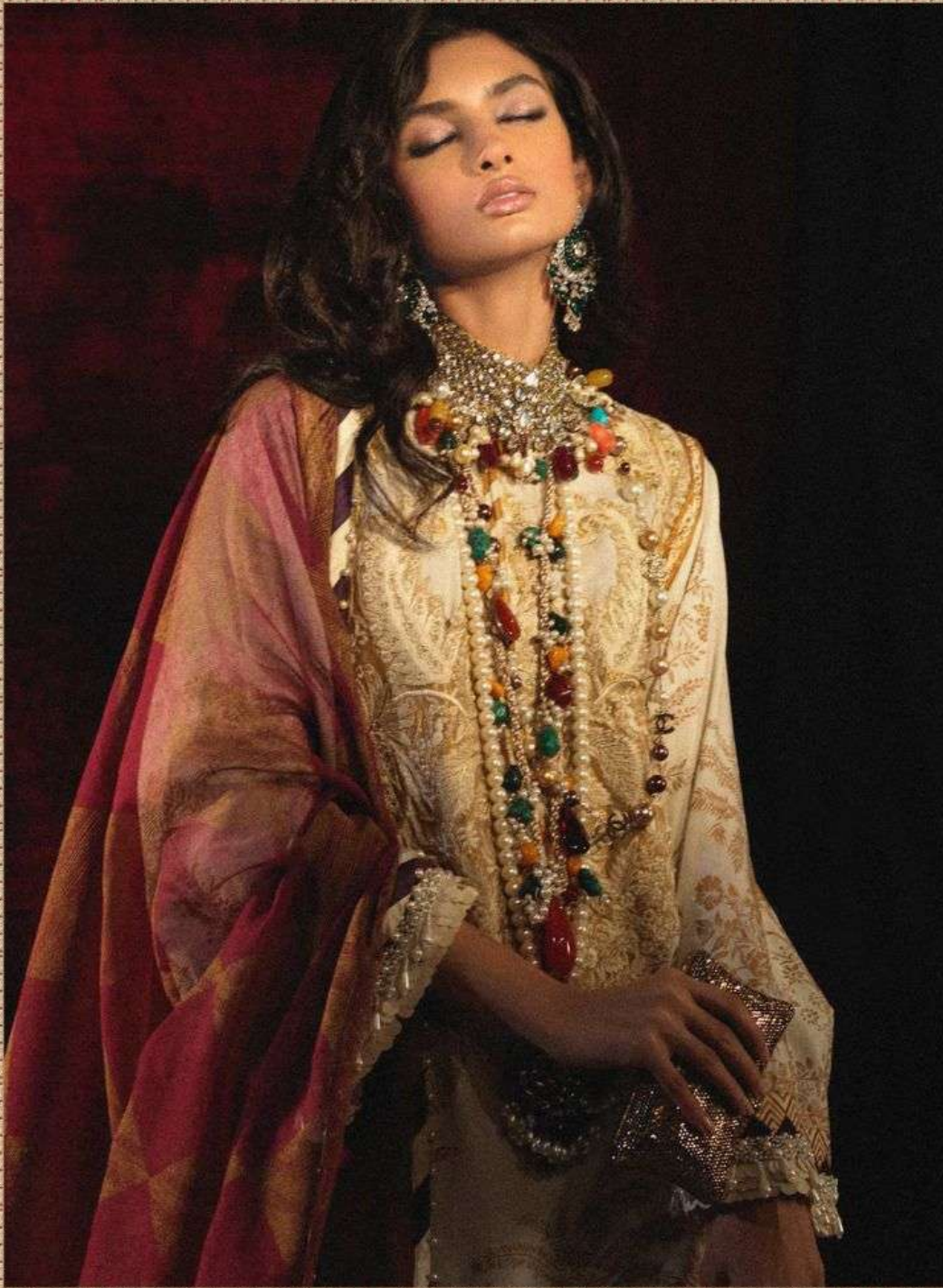


*Seize all attention with this sparkling vibrant color  
attractive dress with natural flower*





Fepic®



SANA SAFINAZ  
*LUXURY LIGHT*





**Fepic®**  
**SANA SAFINAZ**  
*LUXURY LIGHT*

Instagram: [Fepic](#) Facebook: [Fb.com/Fepic11](#)

D.NO.43015

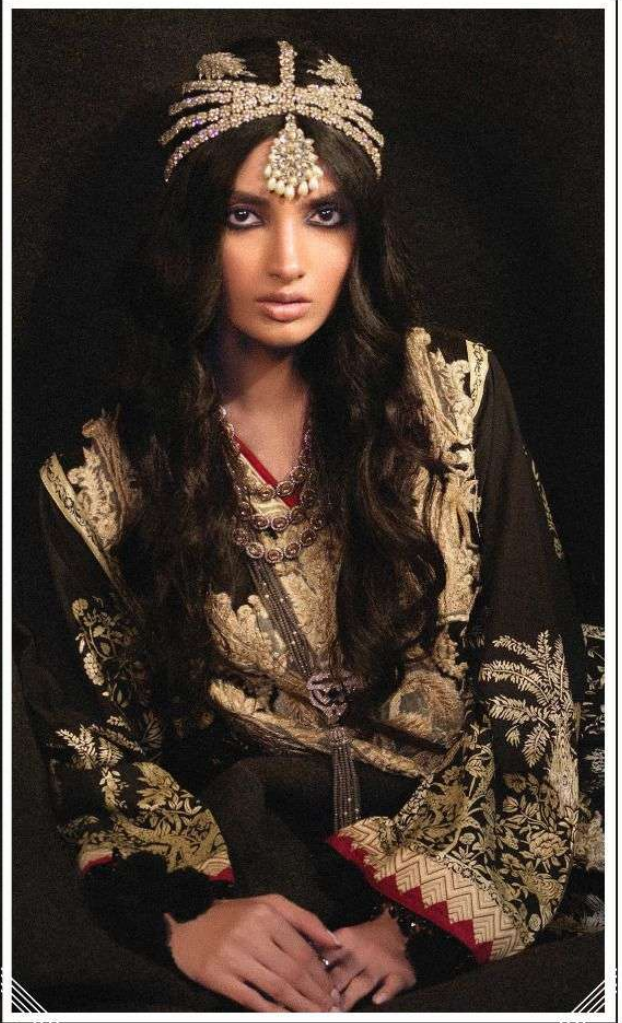
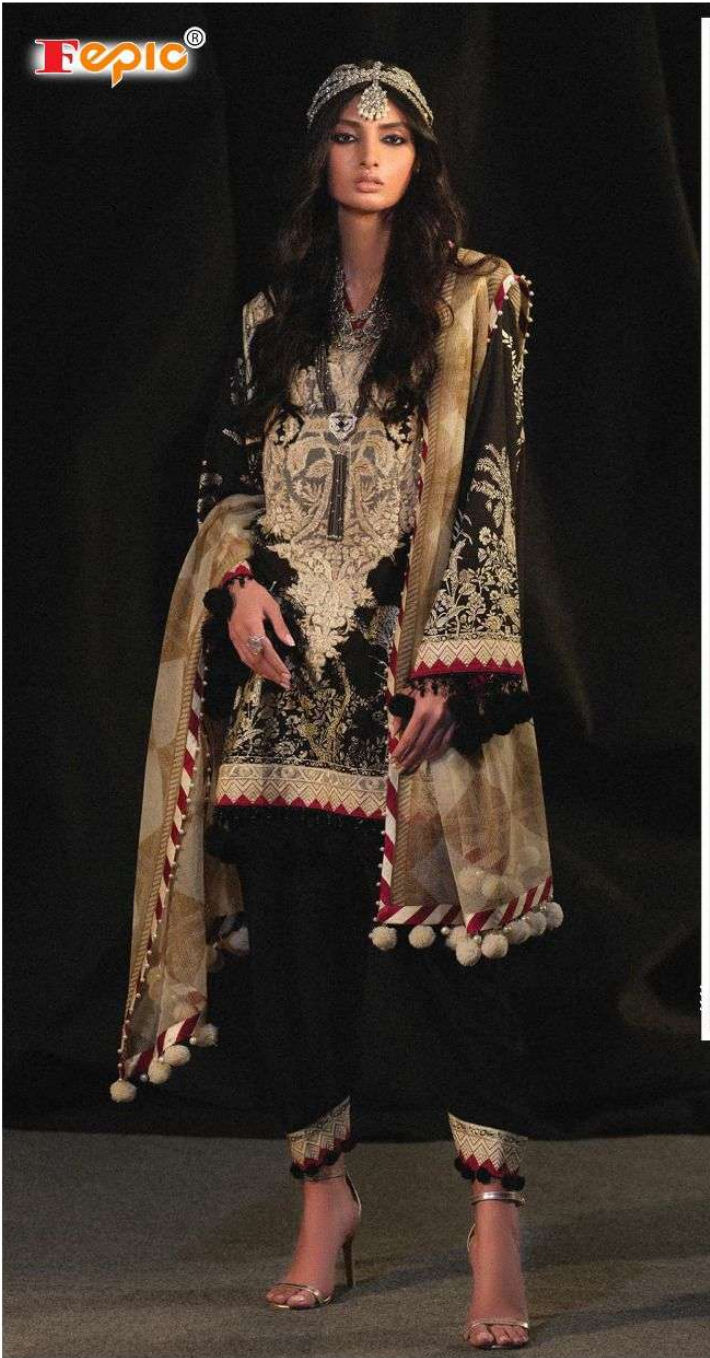




Fepic®  
SANA SAFINAZ  
LUXURY LIGHT  
Instagram: Fepic Facebook: Fb.com/Fepic11  
D.NO.43020



**Epic®**



**WASHING INTRUCTIONS**

DO NOT USE ANY TYPE OF BLEACH OR STAIN REMOVING CHEMICALS  
BEFORE CUTTING / STITCHING, FABRIC SHOULD BE SOAKED BE SOAKED IN WATER  
( ALL COMPONENTS SEPARATELY ) FOR 15 MINUTES  
DO NOT KEEP WET FABRIC IN TWISTED FROM IN ORDER TO AVOID COPY MARKS |  
WASH COLOURED AND WHITE FABRICS SEPARATELY  
IRON CLOTHES AT MODERATE TEMPERATURE | DO NOT DRY FABRIC IN DIRECT SUNLIGHT  
( EXTRA LACES, HANGINGS AND ACCESSORIES ARE NOT INDUDED )

**D.NO.43018**

**SANA SAFINAZ**  
*LUXURY LIGHT*





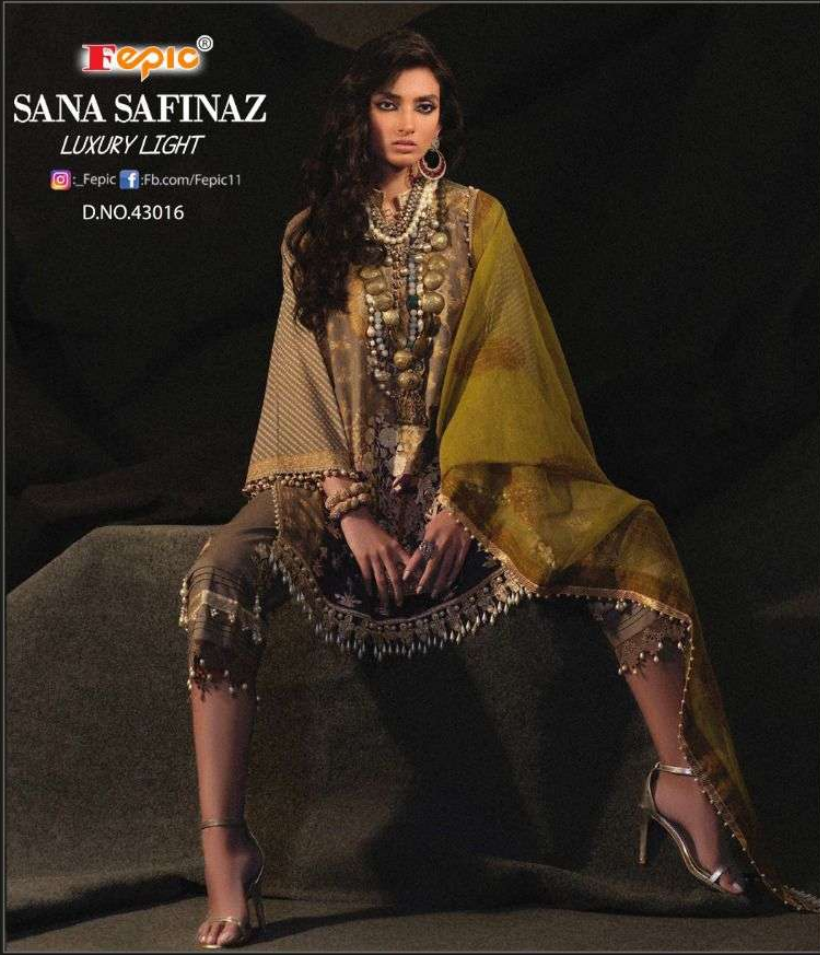
**Fepic®**

**SANA SAFINAZ**

*LUXURY LIGHT*

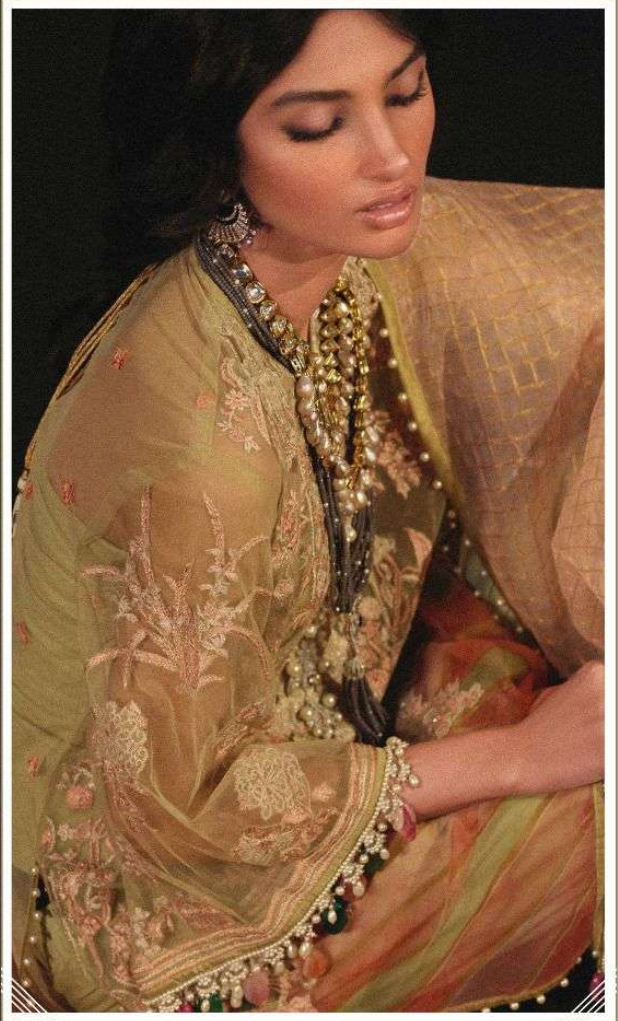
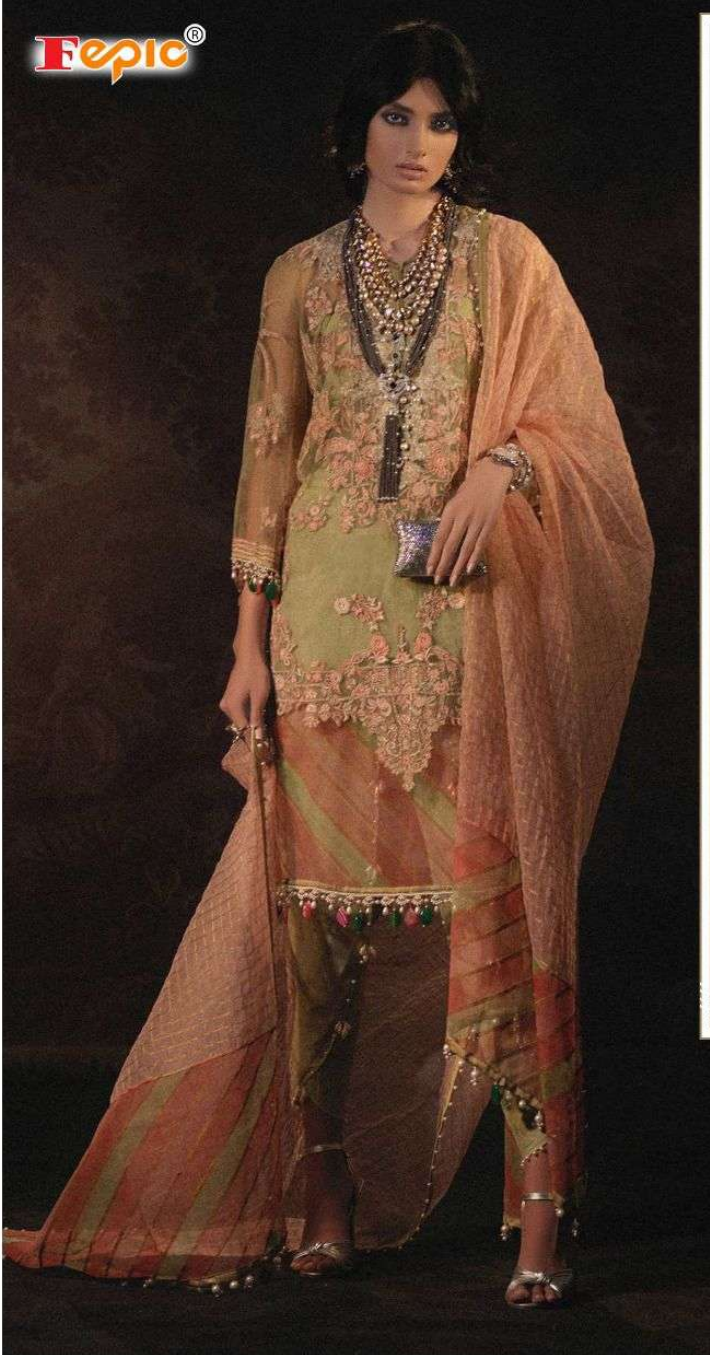
 \_Fepic  Fb.com/Fepic11

D.NO.43016





**Fepic®**



**WASHING INTRUCTIONS**

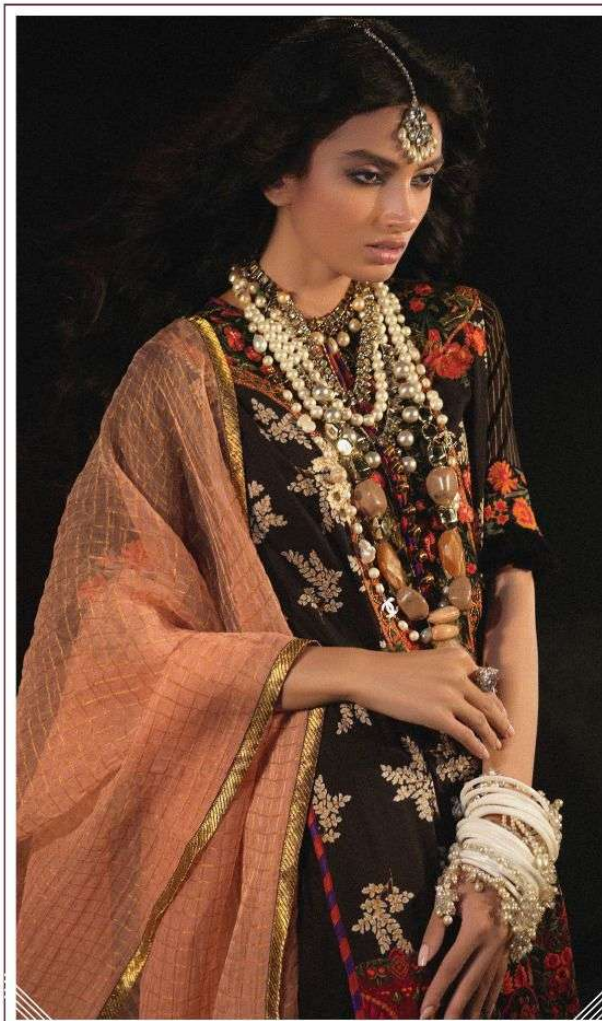
DO NOT USE ANY TYPE OF BLEACH OR STAIN REMOVING CHEMICALS  
BEFORE CUTTING / STITCHING, FABRIC SHOULD BE SOAKED BE SOAKED IN WATER  
( ALL COMPONENTS SEPARATELY ) FOR 15 MINUTES  
DO NOT KEEP WET FABRIC IN TWISTED FROM IN ORDER TO AVOID COPY MARKS |  
WASH COLOURED AND WHITE FABRICS SEPARATELY  
IRON CLOTHES AT MODERATE TEMPERATURE | DO NOT DRY FABRIC IN DIRECT SUNLIGHT  
( EXTRA LACES, HANGINGS AND ACCESSORIES ARE NOT INDUDED )

**D.NO.43019**

**SANA SAFINAZ**  
*LUXURY LIGHT*







#### WASHING INTRUCTIONS

DO NOT USE ANY TYPE OF BLEACH OR STAIN REMOVING CHEMICALS  
BEFORE CUTTING / STITCHING, FABRIC SHOULD BE SOAKED BE SOAKED IN WATER  
( ALL COMPONENTS SEPARATELY ) FOR 15 MINUTES  
DO NOT KEEP WET FABRIC IN TWISTED FROM IN ORDER TO AVOID COPY MARKS |  
WASH COLOURED AND WHITE FABRICS SEPARATELY  
IRON CLOTHES AT MODERATE TEMPERATURE | DO NOT DRY FABRIC IN DIRECT SUNLIGHT  
( EXTRA LACES, HANGINGS AND ACCESSORIES ARE NOT INDUDED )

D.NO.43020

**SANA SAFINAZ**  
*LUXURY LIGHT*



**Fepic®**

**SANA SAFINAZ**

*LUXURY LIGHT*

: \_Fepic : Fb.com/Fepic11

D.NO.43017





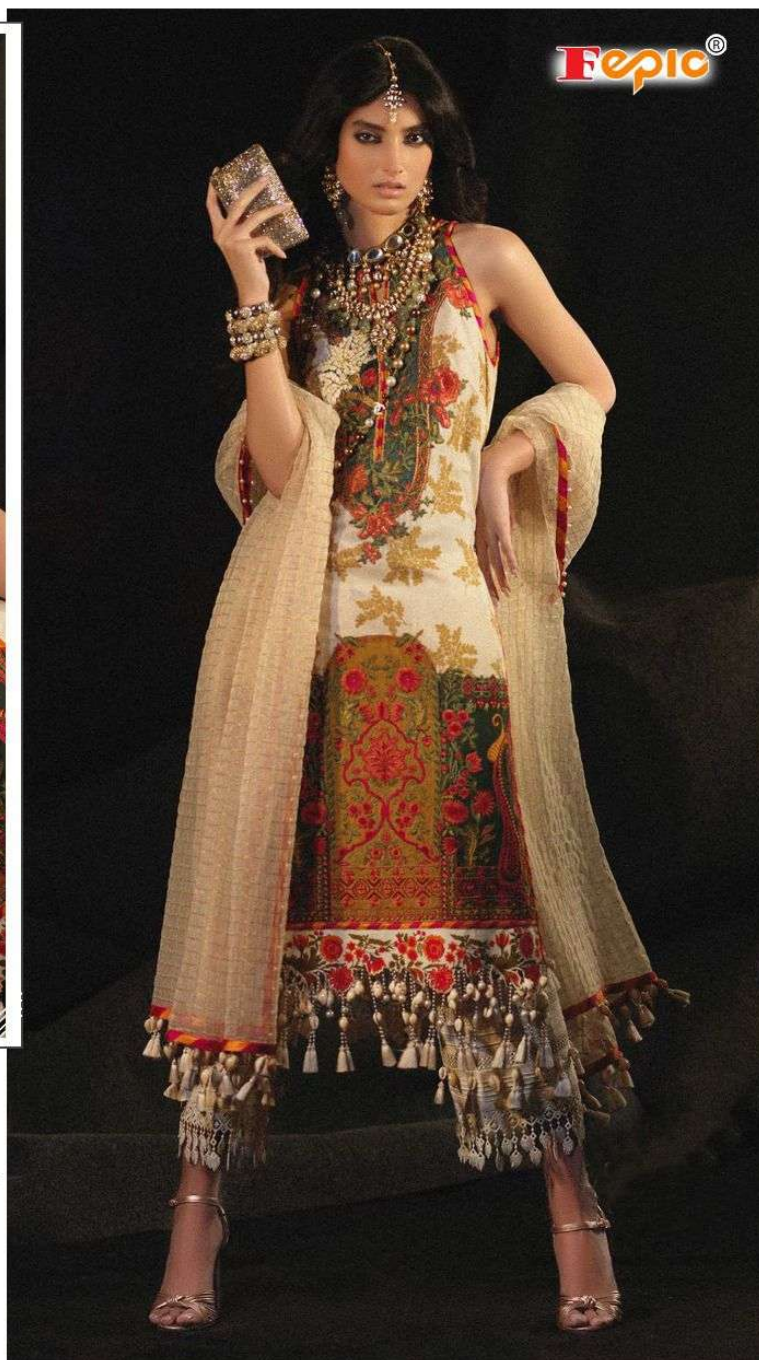
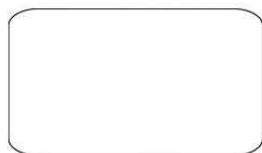


#### WASHING INTRUCTIONS

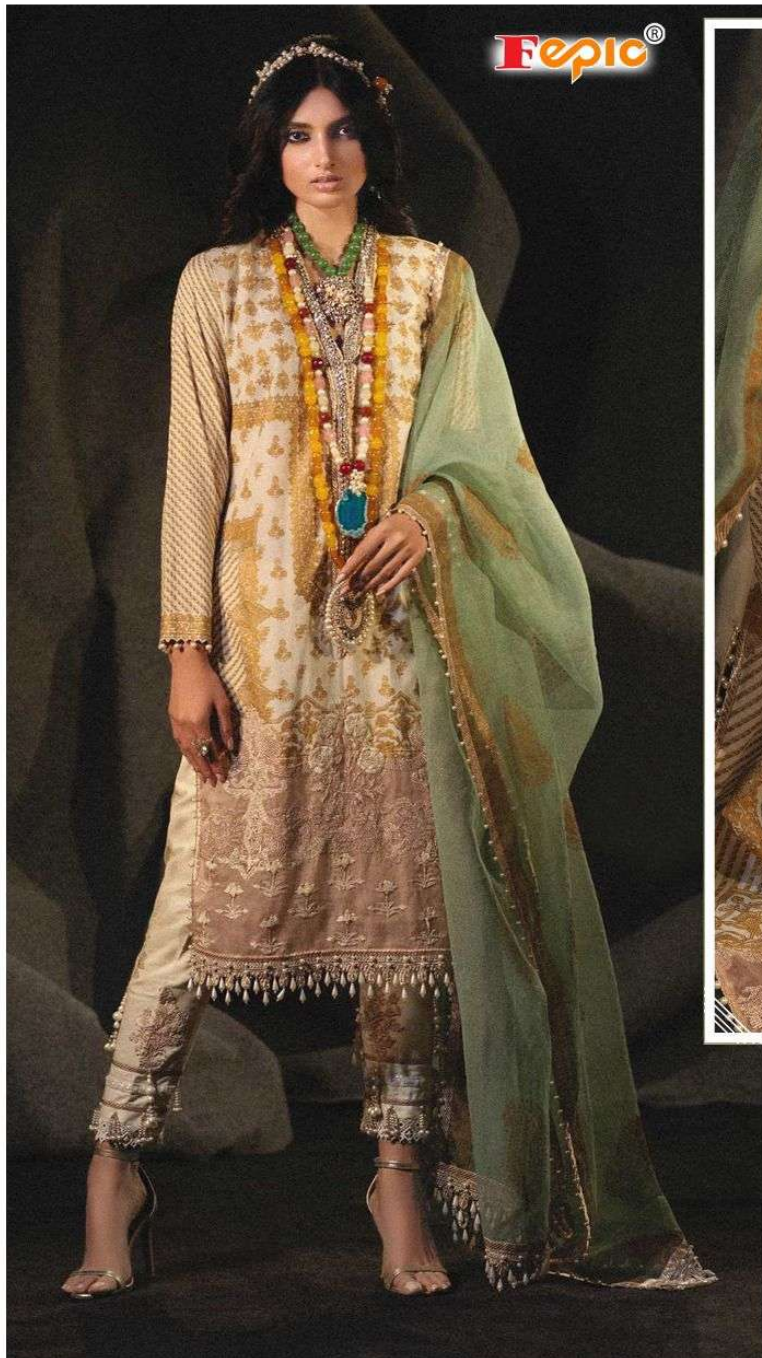
DO NOT USE ANY TYPE OF BLEACH OR STAIN REMOVING CHEMICALS  
 BEFORE CUTTING / STITCHING, FABRIC SHOULD BE SOAKED BE SOAKED IN WATER  
 ( ALL COMPONENTS SEPARATELY ) FOR 15 MINUTES  
 DO NOT KEEP WET FABRIC IN TWISTED FROM IN ORDER TO AVOID COPY MARKS |  
 WASH COLOURED AND WHITE FABRICS SEPARATELY  
 IRON CLOTHES AT MODERATE TEMPERATURE | DO NOT DRY FABRIC IN DIRECT SUNLIGHT  
 ( EXTRA LACES, HANGINGS AND ACCESSORIES ARE NOT INDUDED )

D.NO.43021

**SANA SAFINAZ**  
*LUXURY LIGHT*







**Fepic®**



#### WASHING INTRUCTIONS

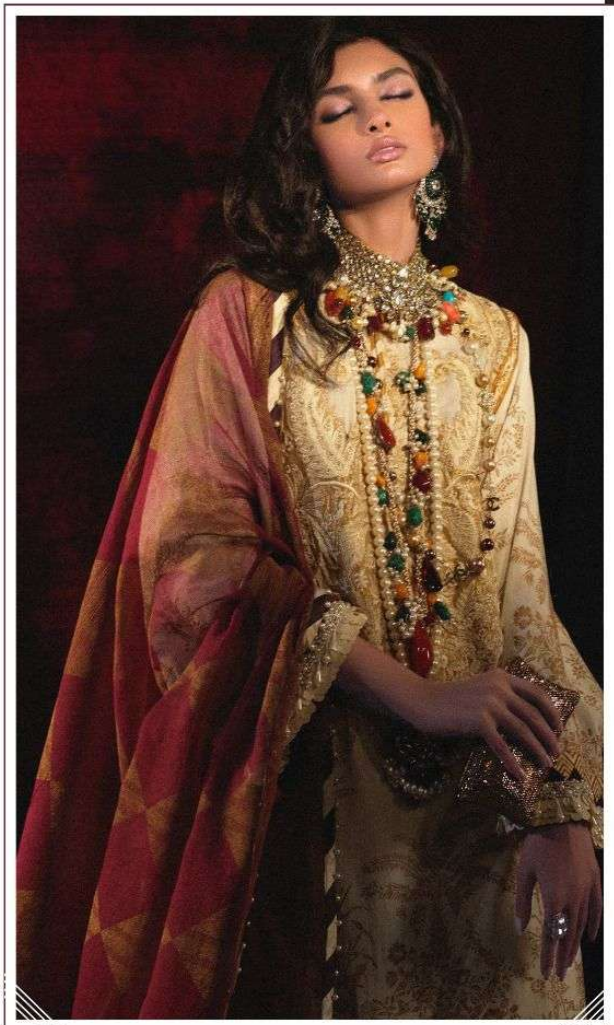
DO NOT USE ANY TYPE OF BLEACH OR STAIN REMOVING CHEMICALS  
BEFORE CUTTING / STITCHING, FABRIC SHOULD BE SOAKED BE SOAKED IN WATER  
( ALL COMPONENTS SEPARATELY ) FOR 15 MINUTES  
DO NOT KEEP WET FABRIC IN TWISTED FROM IN ORDER TO AVOID COPY MARKS |  
WASH COLOURED AND WHITE FABRICS SEPARATELY  
IRON CLOTHES AT MODERATE TEMPERATURE | DO NOT DRY FABRIC IN DIRECT SUNLIGHT  
( EXTRA LACES, HANGINGS AND ACCESSORIES ARE NOT INDUDED )

**D.NO.43015**

**SANA SAFINAZ**  
*LUXURY LIGHT*







#### WASHING INTRUCTIONS

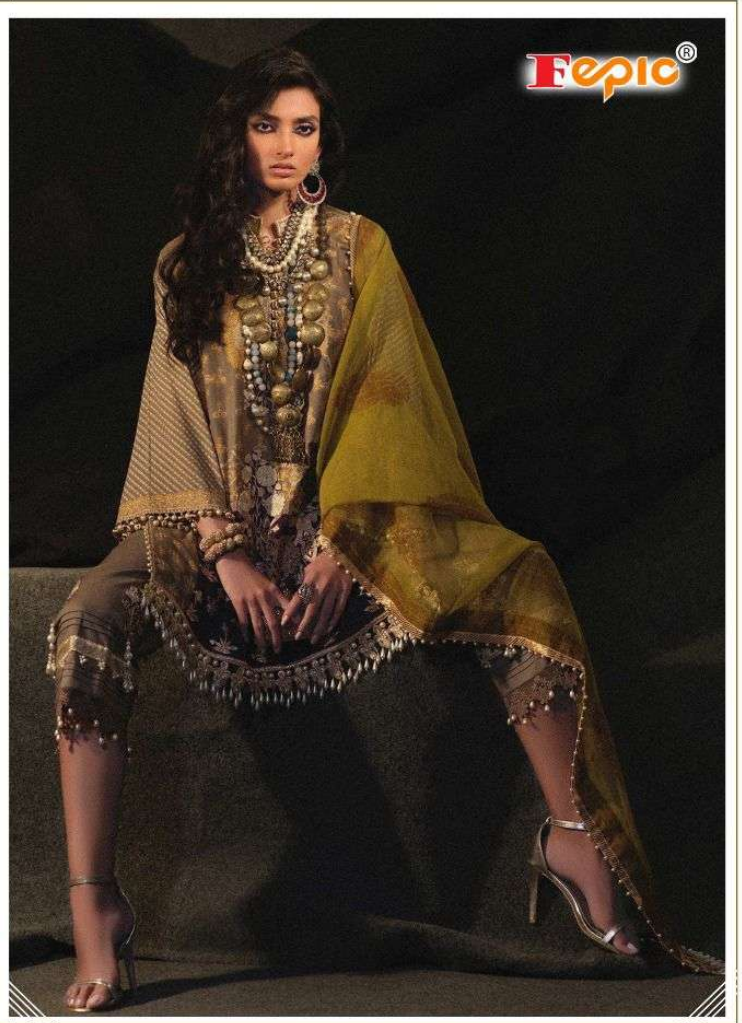
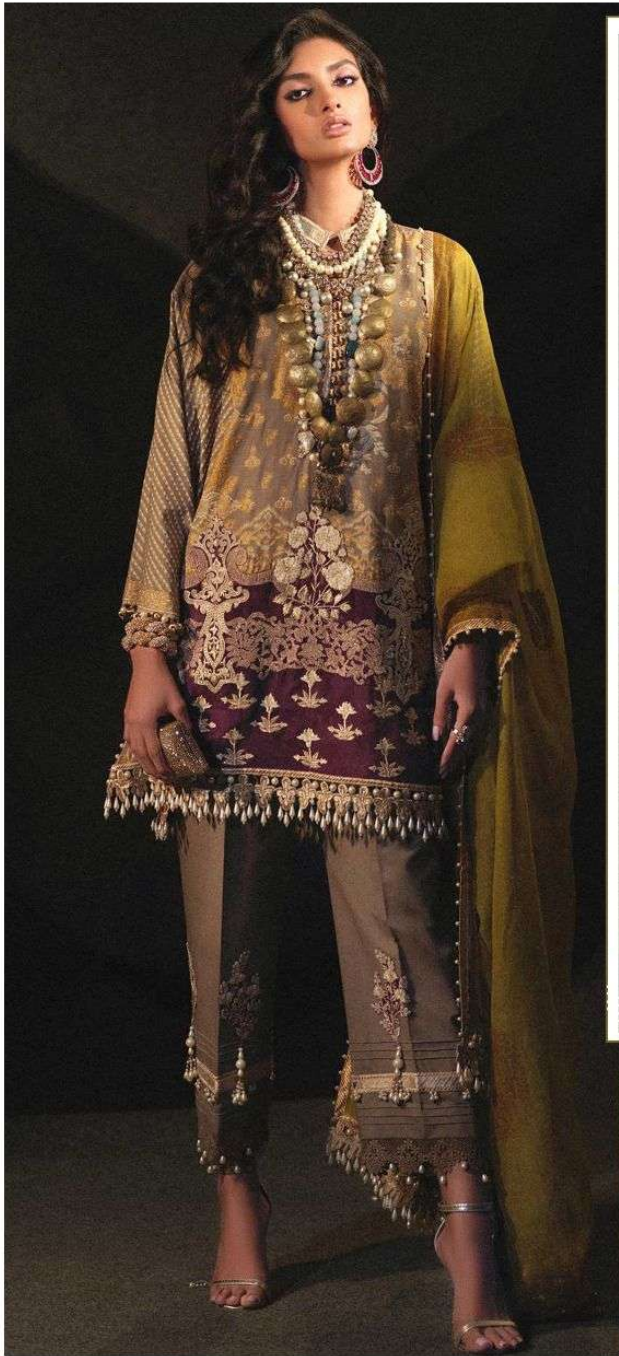
DO NOT USE ANY TYPE OF BLEACH OR STAIN REMOVING CHEMICALS  
BEFORE CUTTING / STITCHING, FABRIC SHOULD BE SOAKED BE SOAKED IN WATER  
( ALL COMPONENTS SEPARATELY ) FOR 15 MINUTES  
DO NOT KEEP WET FABRIC IN TWISTED FROM IN ORDER TO AVOID COPY MARKS |  
WASH COLOURED AND WHITE FABRICS SEPARATELY  
IRON CLOTHES AT MODERATE TEMPERATURE | DO NOT DRY FABRIC IN DIRECT SUNLIGHT  
( EXTRA LACES, HANGINGS AND ACCESSORIES ARE NOT INDUDED )

D.NO.43017

**SANA SAFINAZ**  
*LUXURY LIGHT*







#### WASHING INTRUCTIONS

DO NOT USE ANY TYPE OF BLEACH OR STAIN REMOVING CHEMICALS  
BEFORE CUTTING / STITCHING, FABRIC SHOULD BE SOAKED BE SOAKED IN WATER  
( ALL COMPONENTS SEPARATELY ) FOR 15 MINUTES  
DO NOT KEEP WET FABRIC IN TWISTED FROM IN ORDER TO AVOID COPY MARKS |  
WASH COLOURED AND WHITE FABRICS SEPARATELY  
IRON CLOTHES AT MODERATE TEMPERATURE | DO NOT DRY FABRIC IN DIRECT SUNLIGHT  
( EXTRA LACES, HANGINGS AND ACCESSORIES ARE NOT INDUDED )

D.NO.43016

**SANA SAFINAZ**  
*LUXURY LIGHT*





**Fepic®**

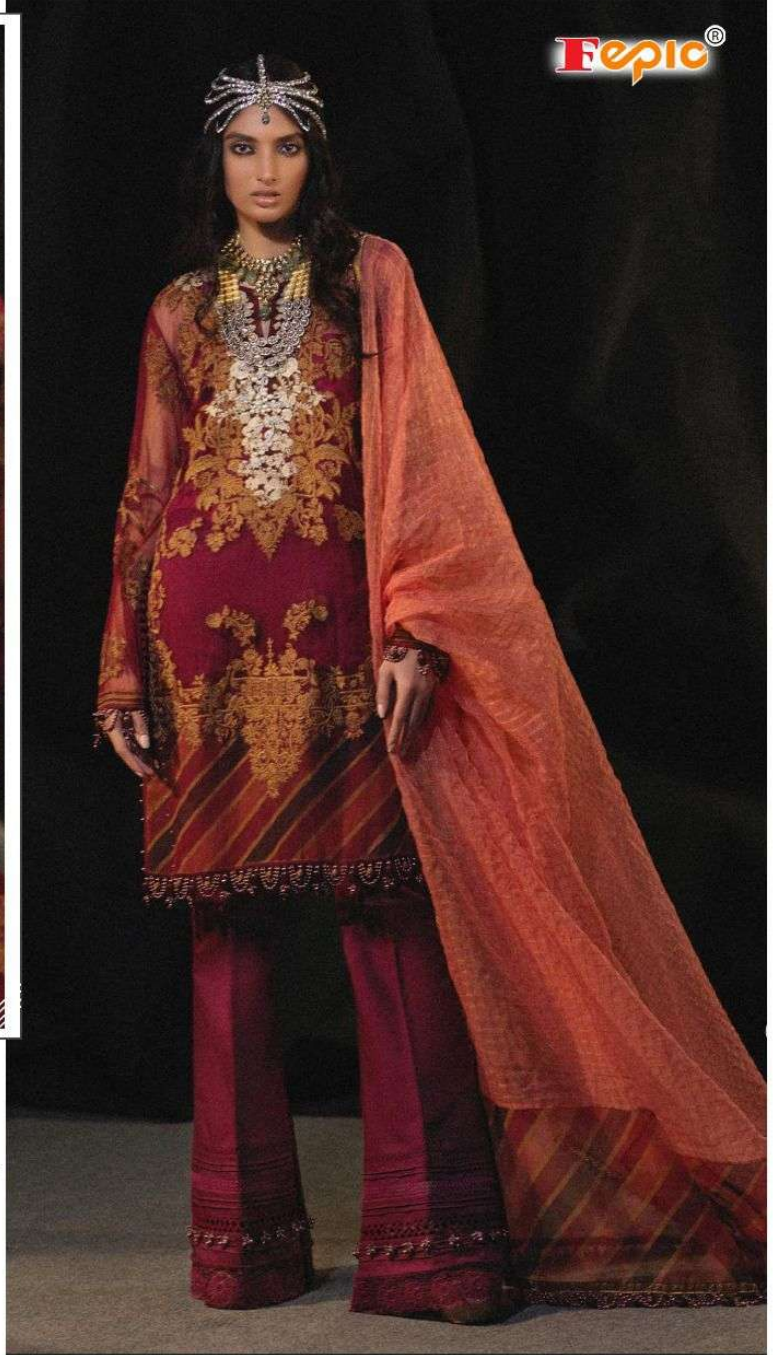


**WASHING INTRUCTIONS**

DO NOT USE ANY TYPE OF BLEACH OR STAIN REMOVING CHEMICALS  
BEFORE CUTTING / STITCHING, FABRIC SHOULD BE SOAKED BE SOAKED IN WATER  
( ALL COMPONENTS SEPARATELY ) FOR 15 MINUTES  
DO NOT KEEP WET FABRIC IN TWISTED FROM IN ORDER TO AVOID COPY MARKS |  
WASH COLOURED AND WHITE FABRICS SEPARATELY  
IRON CLOTHES AT MODERATE TEMPERATURE | DO NOT DRY FABRIC IN DIRECT SUNLIGHT  
( EXTRA LACES, HANGINGS AND ACCESSORIES ARE NOT INDUDED )

**D.NO.43022**

**SANA SAFINAZ**  
*LUXURY LIGHT*







**Fepic®**

**SANA SAFINAZ**  
*LUXURY LIGHT*

Instagram: Fepic Facebook: Fb.com/Fepic11

D.NO.43022



D.NO	TOP	BOTTOM	DUPATTA	RATE
43015	PURE COTTON PRINTED WITH EMBROIDERED PATCHES	CHIFFON PRINTED WITH LACE	SEMILAWN WITH EMBROIDERED PATCHES	941
43016	PURE COTTON PRINTED WITH EMBROIDERED PATCHES	CHIFFON PRINTED WITH LACE	SEMILAWN WITH EMBROIDERED PATCHES	941
43017	PURE COTTON PRINTED WITH EMBROIDERED PATCHES	CHIFFON PRINTED WITH LACE	SEMILAWN DYED	881
43018	PURE COTTON PRINTED WITH EMBROIDERED PATCHES	CHIFFON PRINTED WITH LACE	SEMILAWN DYED	881
43019	HEAVY NET EMBROIDERED WITH BACK AND SLEEVE WORK INNER PURE COTTON PRINTED	ORGANZA CHAQUES WITH DIGITAL BUNCHES AND LACE	SEMILAWN DYED	1051
43020	PURE COTTON PRINTED WITH EMBROIDERED PATCHES	ORGANZA CHAQUES EITH LACE	SEMILAWN DYED	921
43021	PURE COTTON PRINTED WITH EMBROIDERED PATCHES	ORGANZA CHAQUES EITH LACE	SEMILAWN DYED	921
43022	PURE COTTON PRINTED WITH EMBROIDERED PATCHES	ORGANZA CHAQUES WITH DIGITAL BUNCHES AND LACE	SEMILAWN DYED	1051
				AVG RATE-949

**Fepic®** **SANA SAFINAZ**  
*LUXURY LIGHT*

 :\_Fepic

 :Fb.com/Fepic11





D.NO.43015



D.NO.43016



D.NO.43017



D.NO.43018



D.NO.43019



D.NO.43020



D.NO.43021

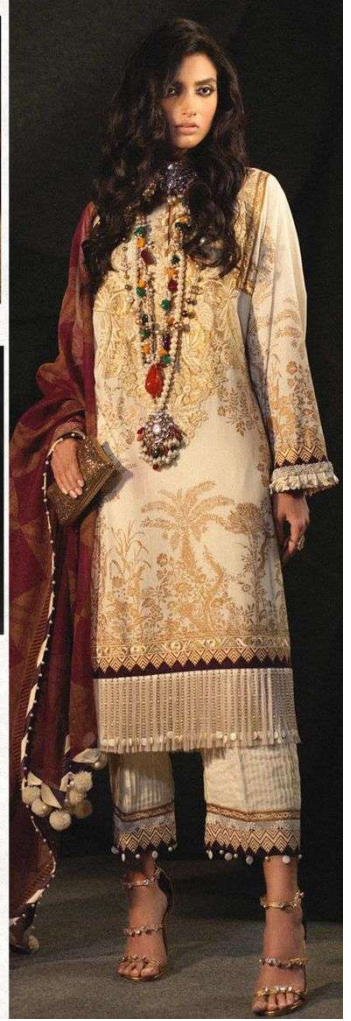


D.NO.43022

**Fepic®**  
**SANA SAFINAZ**  
*LUXURY LIGHT*

Instagram: [\\_Fepic](#)

Facebook: [Fb.com/Fepic11](#)











Sleeves

Dupatta

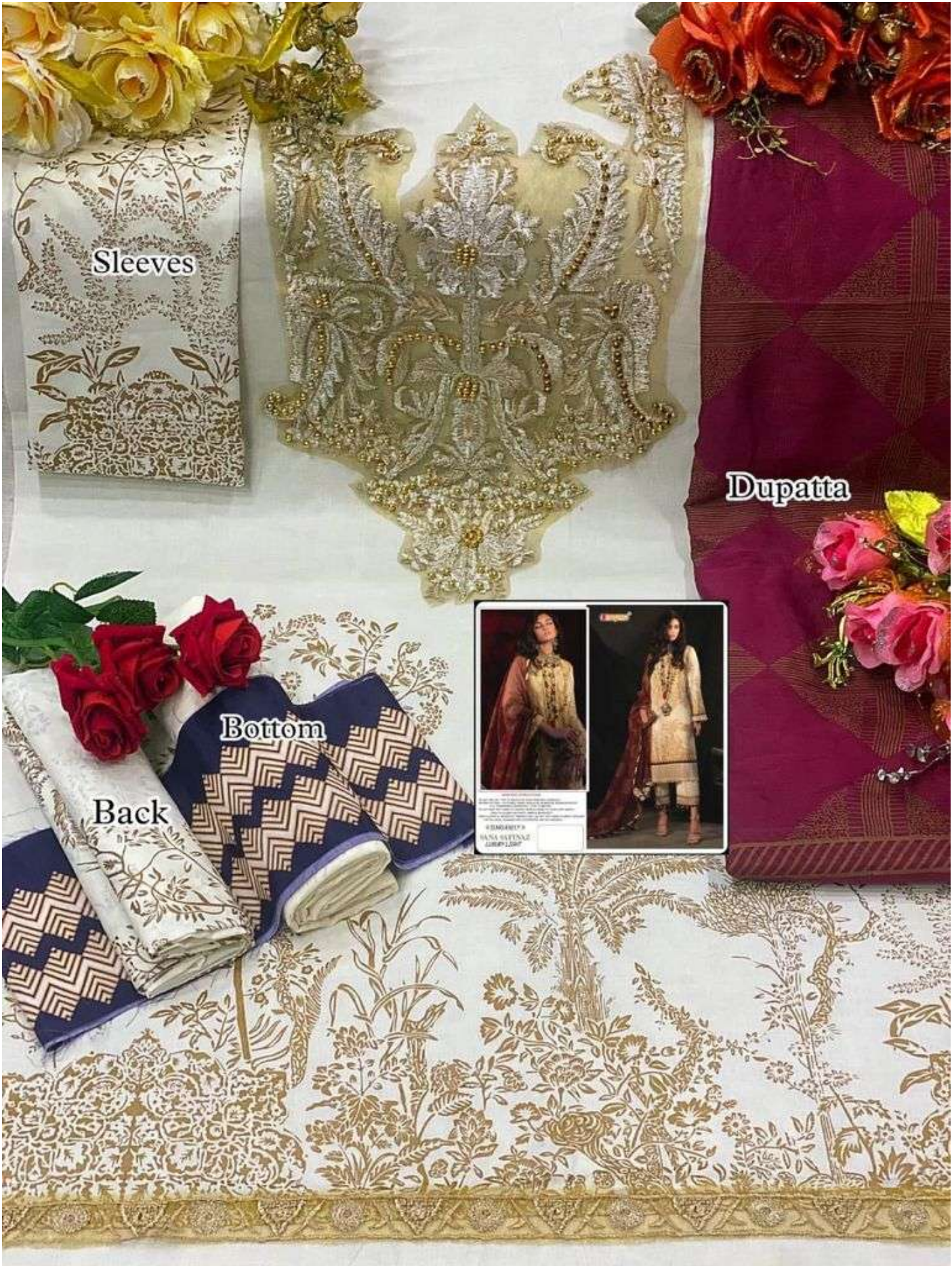
Bottom

Back

Patch







Sleeves

Dupatta

Bottom

Back











Sleeves

Dupatta

Bottom

Back

Patch







Sleeves

Dupatta

Bottom

Back











Sleeves

Dupatta

Back

Bottom

Heavy Emb Front

Daman

