

## REPUBLIC BRIDAL COLLECTION

# 26002

**TOP** - BUTTERFLY NET WITH FULL FLOR 3 MTR GHER WITH  
HEAVY EMBROIDERY & HANDWORK

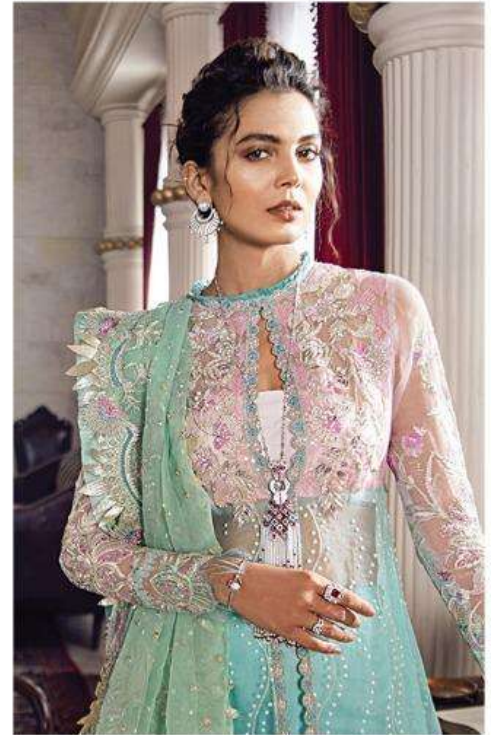
**BOTTOM** - SANTTON WITH HEAVY EMBROIDERY

**DUPATTA** - HEAVY NET WITH EMBROIDERY TWO SIDE BORDER WORK



DRY CLEAN ONLY.   
DO NOT USE ANY BLEACH OR STAIN REMOVING CHEMICAL.   
IRON THE FABRIC AT MODERATE TEMPERATURE. 





## REPUBLIC

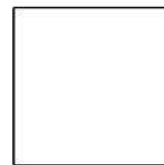
BRIDAL COLLECTION


# 26002

**TOP** - BUTTERFLY NET WITH FULL FLOR 3 MTR GHER WITH  
HEAVY EMBROIDERY & HANDWORK

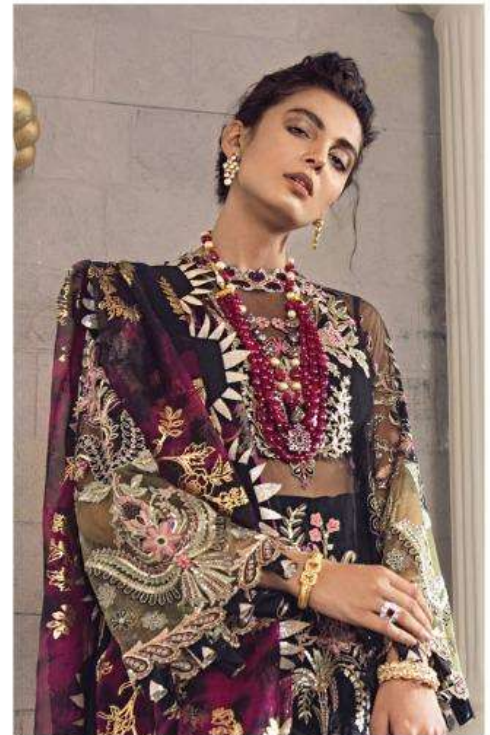
**BOTTOM** - SANTTON WITH HEAVY EMBROIDERY

**DUPATTA** - HEAVY NET WITH EMBROIDERY TWO SIDE BORDER WORK



DRY CLEAN ONLY.   
DO NOT USE ANY BLEACH OR STAIN REMOVING CHEMICAL.   
IRON THE FABRIC AT MODERATE TEMPERATURE. 





# REPUBLIC

BRIDAL COLLECTION

## 26003

**TOP** - HEAVY BUTTERFLY NET WITH EMBROIDERY & HANDWORK

**BOTTOM** - SANTTON WITH HEAVY EMBROIDERY

**DUPATTA** - ORGANZA STICHU WITH DIGITAL PRINT WITH  
FIOL FOUR SIDE LACE



DRY CLEAN ONLY.   
DO NOT USE ANY BLEACH OR STAIN REMOVING CHEMICAL.   
IRON THE FABRIC AT MODERATE TEMPERATURE. 





## REPUBLIC BRIDAL COLLECTION


# 26001

**TOP** - BUTTERFLY NET WITH HEAVY EMBROIDERY & HANDWORK  
WITH FULL LONG SIZE

**BOTTOM** - SANTTON WITH HEAVY EMBROIDERY

**DUPATTA** - NET WITH EMBROIDERY TWO SIDE BORDER WORK



DRY CLEAN ONLY.   
DO NOT USE ANY BLEACH OR STAIN REMOVING CHEMICAL.   
IRON THE FABRIC AT MODERATE TEMPERATURE. 





D.NO.26001



D.NO.26002



D.NO.26003

**REPUBLIC**  
BRIDAL COLLECTION