



**Fepic®**







**Fepic®**







**Fepic<sup>®</sup>**







**Fepic<sup>®</sup>**







**Fepic®**







**Fepic®**



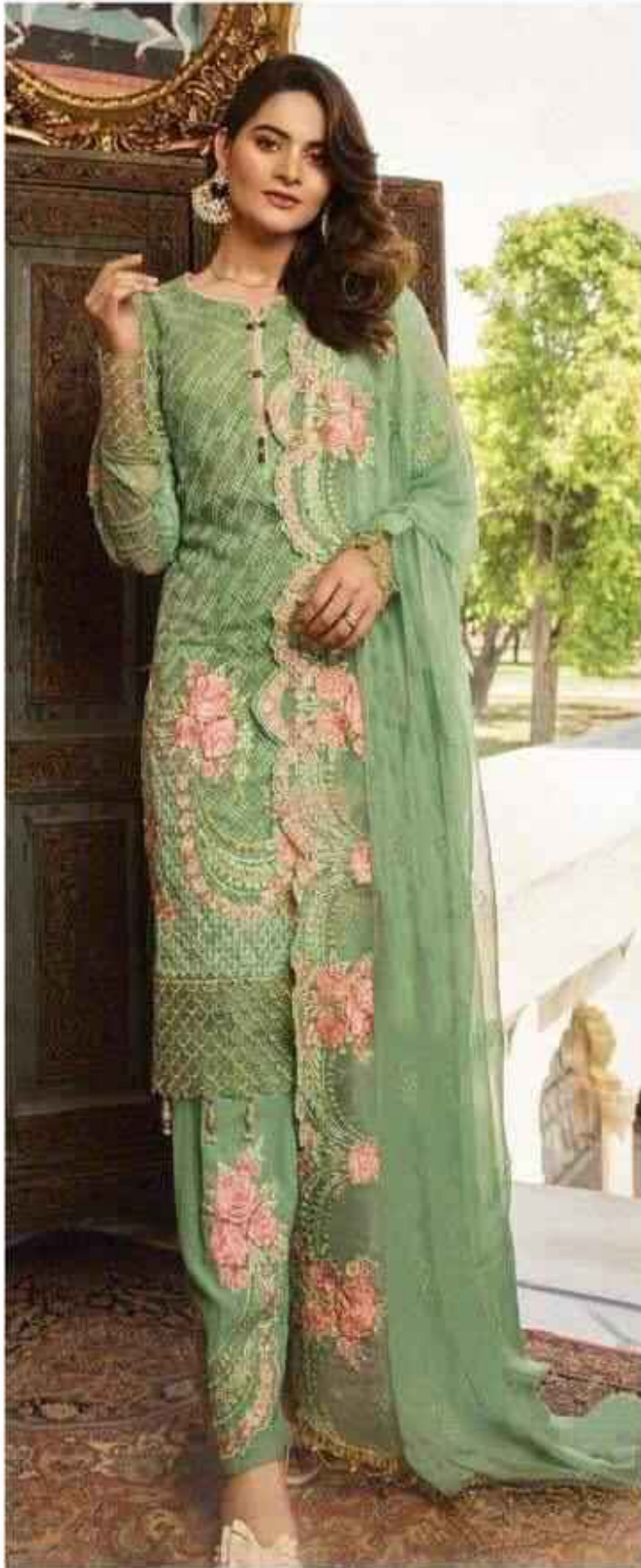




**Fepic<sup>®</sup>**







**Fepic®**







D.NO  
56001





Fepic®



D.NO  
56003





● D.NO.57002 ●





● D.NO.57003 ●





● D.NO.57004 ●



**Epic®**



● D.NO.57005 ●





D.NO  
58001







D.NO  
58002





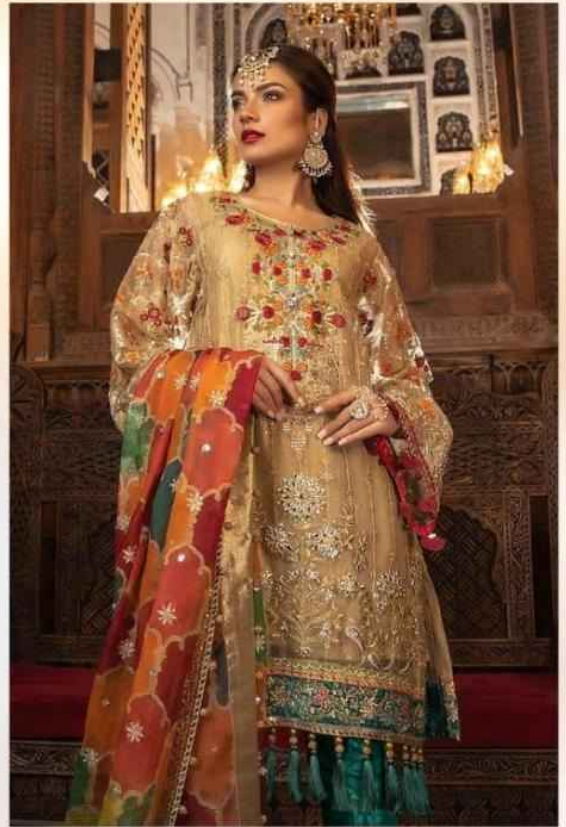


Epic®



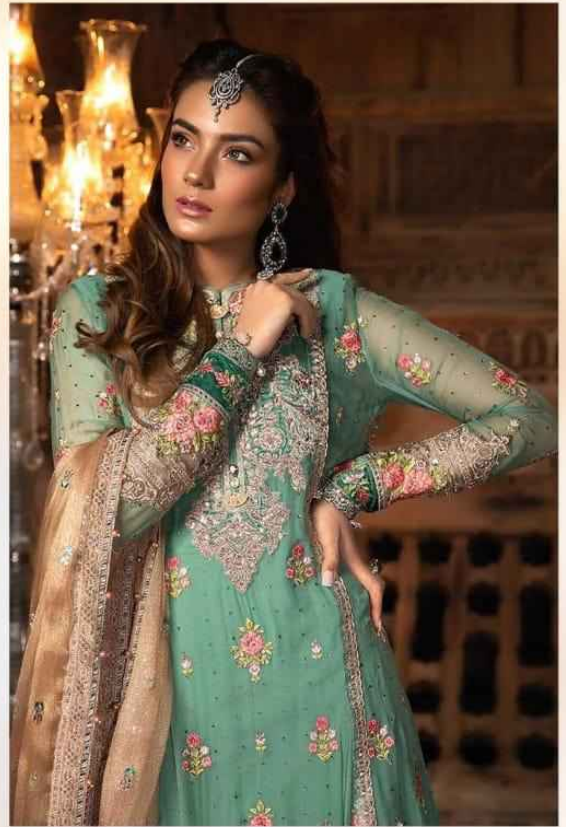
D.NO.60001





D.NO.60002





D.NO.60003





D.NO.60004





D.NO.61005







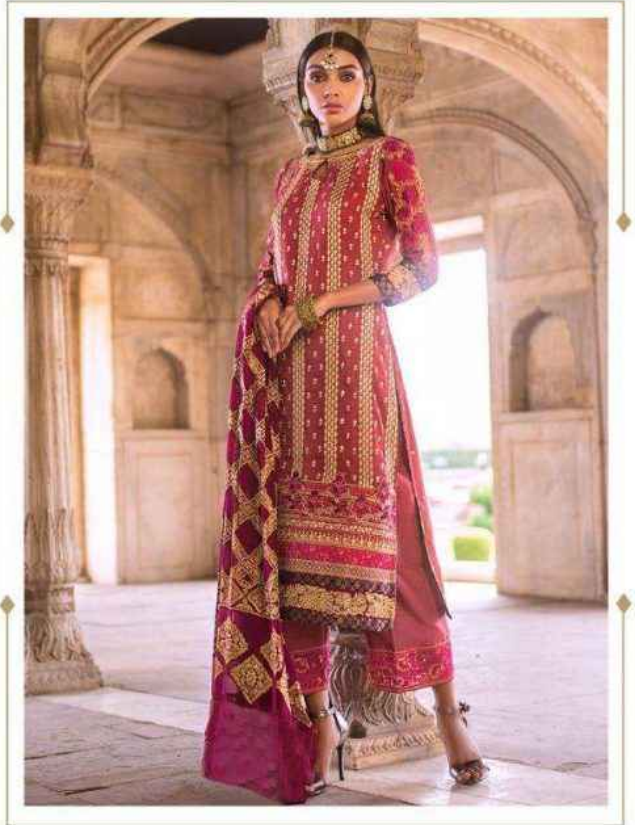
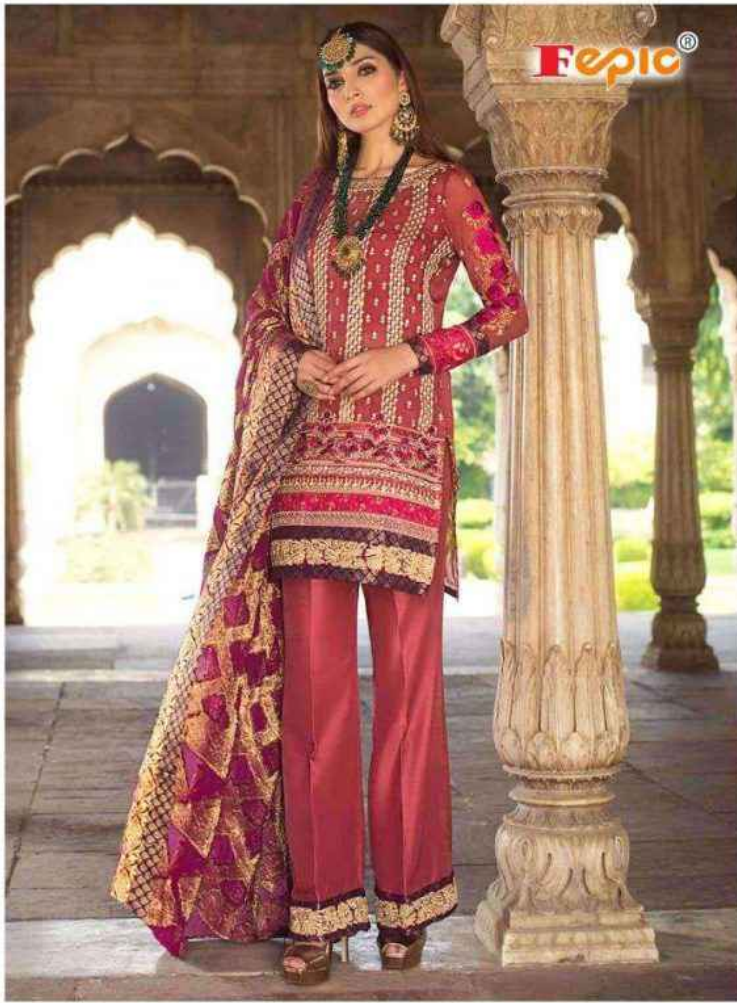
ROSEMOON



QR











Fepic®

D.NO.63001





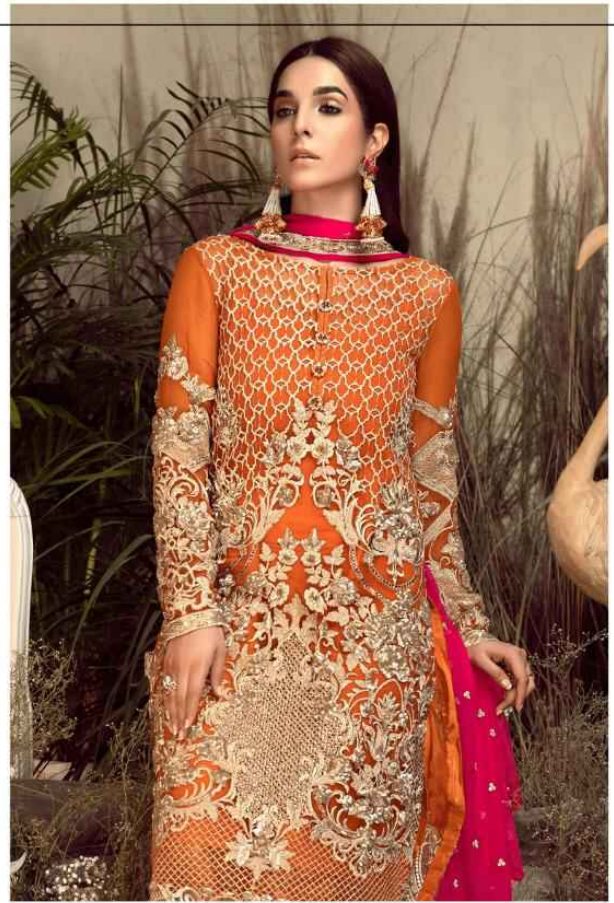
D.NO.63004





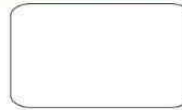


D.NO.64001



D.NO.64002





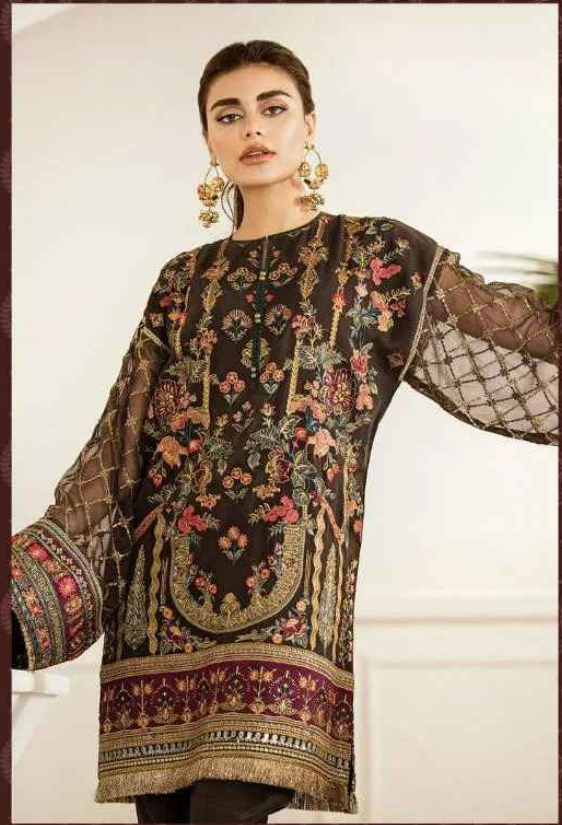
D.NO.64004







Epic®



ROSEMEEN  
BRL

D.NO. 66006



QR



**ROSEMEEN**  
crimson'20



QR





**ROSEMEEN**  
crimson'20

D.NO.  
67002



QR





**ROSEMEEN**  
crimson'20

D.NO.  
67004



QR







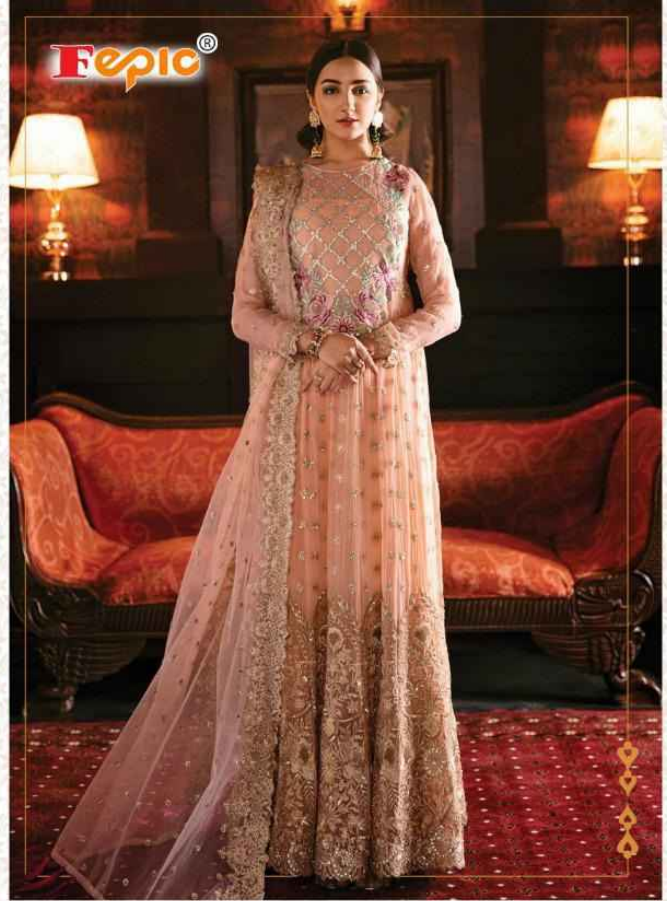
**ROSEMEEN**  
crimson'20

D.NO.  
67006



QR





**ROSEMEEN**  
Carnival'20

D.NO.  
68006



QR

**WASHING INSTRUCTIONS**

DO NOT USE ANY TYPE OF BLEACH OR STAIN REMOVING CHEMICALS  
BEFORE CUTTING / STITCHING. FABRIC SHOULD BE SOAKED IN WATER  
( ALL COMPONENTS SEPARATELY ) FOR 15 MINUTES

DO NOT KEEP WET FABRIC IN TWISTED FORM IN ORDER TO AVOID COPY MARKS |  
WASH COLOURED AND WHITE FABRICS SEPARATELY

IRON CLOTHES AT MODERATE TEMPERATURE | DO NOT DRY FABRIC IN DIRECT SUNLIGHT





#### WASHING INSTRUCTIONS

DO NOT USE ANY TYPE OF BLEACH OR STAIN REMOVING CHEMICALS  
BEFORE CUTTING / STITCHING . FABRIC SHOULD BE SOAKED IN WATER  
( ALL COMPONENTS SEPARATELY ) FOR 15 MINUTES

DO NOT KEEP WET FABRIC IN TWISTED FROM IN ORDER TO AVOID COPY MARKS I

WASH COLOURED AND WHITE FABRICS SEPARATELY

IRON CLOTHES AT MODERATE TEMPERATURE I DO NOT DRY FABRIC IN DIRECT SUNLIGHT

**ROSEMEEN**

Cierra

D.NO.69006



QR



**ROSEMEEN**  
Cross Culture  
D.NO.71002



QR





**ROSEMEEN**  
Cross Culture  
D.NO.71006



QR



#### WASHING INSTRUCTIONS

DO NOT USE ANY TYPE OF BLEACH OR STAIN REMOVING CHEMICALS  
BEFORE CUTTING / STITCHING. FABRIC SHOULD BE SOAKED IN WATER  
( ALL COMPONENTS SEPARATELY ) FOR 15 MINUTES  
DO NOT KEEP WET FABRIC IN TWISTED FORM IN ORDER TO AVOID COPY MARKS !  
WASH COLOURED AND WHITE FABRICS SEPARATELY  
IRON CLOTHES AT MODERATE TEMPERATURE ! DO NOT DRY FABRIC IN DIRECT SUNLIGHT

**NAZAKAT**  
D.NO.C1010



QR





C-1024

**WASHING INSTRUCTIONS**

DO NOT USE ANY TYPE OF BLEACH OR STAIN REMOVING CHEMICALS  
BEFORE CUTTING / STITCHING. FABRIC SHOULD BE SOAKED IN WATER  
( ALL COMPONENTS SEPARATELY ) FOR 15 MINUTES  
DO NOT KEEP WET FABRIC IN TWISTED FROM IN ORDER TO AVOID COPY MARKS  
WASH COLOURED AND WHITE FABRICS SEPARATELY  
IRON CLOTHES AT MODERATE TEMPERATURE | DO NOT DRY FABRIC IN DIRECT SUNLIGHT



QR



C-1025

**WASHING INSTRUCTIONS**

DO NOT USE ANY TYPE OF BLEACH OR STAIN REMOVING CHEMICALS  
BEFORE CUTTING / STITCHING, FABRIC SHOULD BE SOAKED IN WATER  
( ALL COMPONENTS SEPARATELY ) FOR 15 MINUTES  
DO NOT KEEP WET FABRIC IN TWISTED FORM IN ORDER TO AVOID COPY MARKS  
WASH COLOURED AND WHITE FABRICS SEPARATELY  
IRON CLOTHES AT MODERATE TEMPERATURE | DO NOT DRY FABRIC IN DIRECT SUNLIGHT



QR