

A woman with dark hair pulled back, looking directly at the camera. She is wearing a cream-colored kurta with a subtle floral pattern and a large, flowing shawl with a wide border of horizontal stripes and floral motifs. The background is a soft, light pink.

GARDEN

*Heer*

BY KIMORA

CONTEMPORARY INDIAN WEAR

A woman with dark hair pulled back, looking directly at the camera. She is wearing a cream-colored kurta with a subtle floral pattern and a large, flowing shawl with a wide border of horizontal stripes and floral motifs. The background is a soft, light pink.

GARDEN

*Heer*

BY KIMORA

CONTEMPORARY INDIAN WEAR



9951



HEER



9952



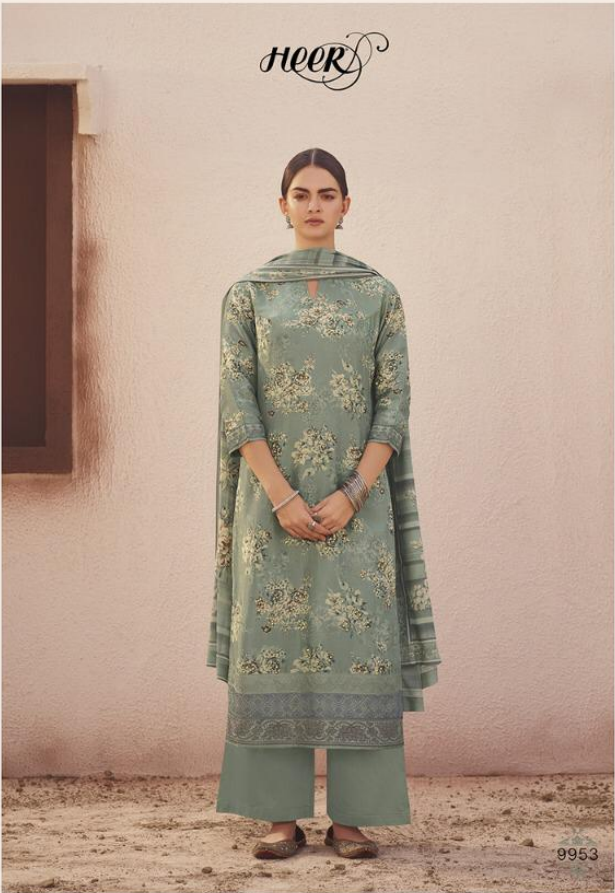
#### CONTEMPORARY INDIAN WEAR

Heera & Ranjha, a romantic folk tale epitomises the beauty and grace of Heer, our muse.

A charming and playful free spirits, Heer is a synonym for a loved one and an eternal inspiration for kimora as we craft colourful and intricate collections for Heer's of today; to be remembered fondly and cherished with love.

Team Kimora









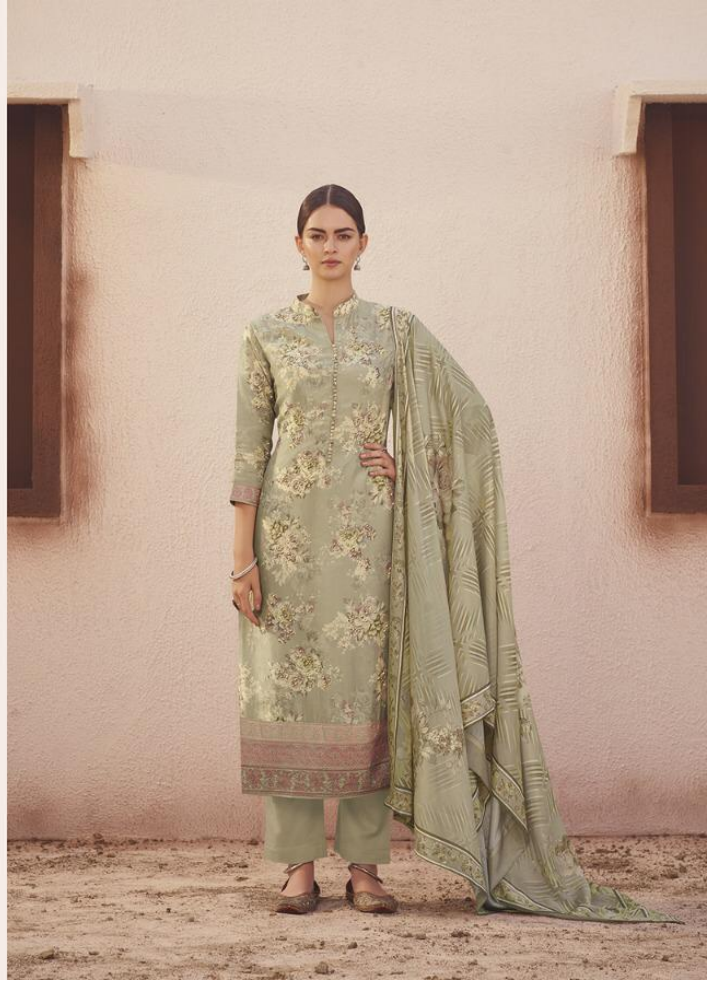
HEER

9954





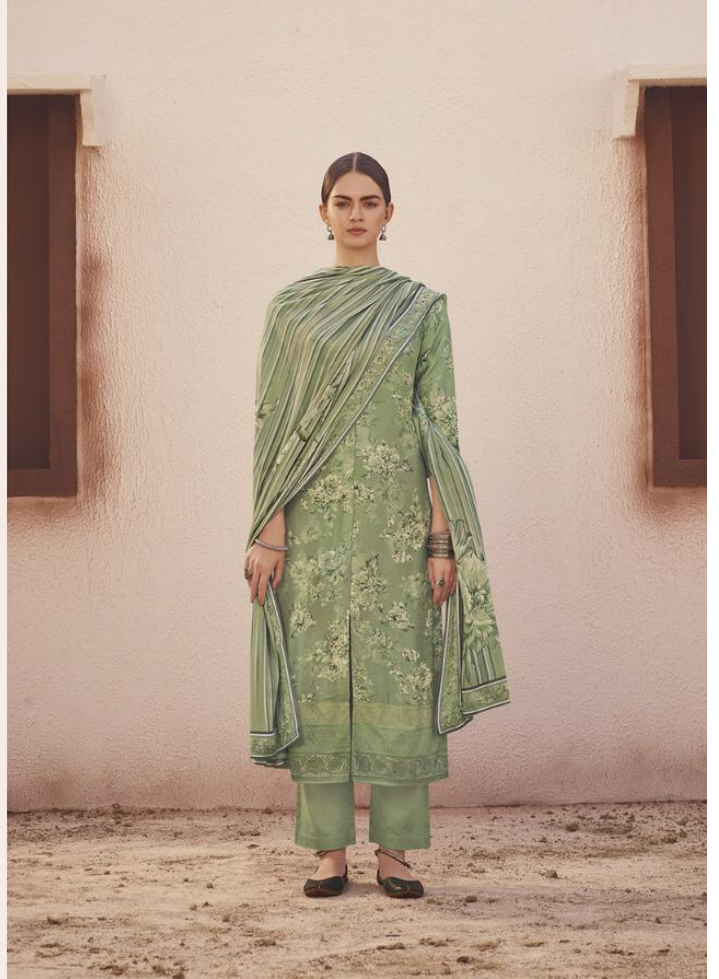
9954



HEER



9955





HEER



9956



9957



HEER

9956





9951



9952



9955



9956



9953



9954



9957



9958

# GARDEN

HEER VOL-66

DESIGN NO.

9951 to 9958

: TOP :

PURE DOLA SILK FABRIC ALONG WITH FLORAL  
DIGITAL PRINT MOTIFS HIGHLIGHTED WITH STONE AND  
CHIKANKARI EMBROIDERY ON THE HEM & SLEEVES

: DUPATTA :

CHINON CHIFFON FLORAL DIGITAL PRINT

: BOTTOM :

PURE FINE COTTON SATIN

*Heer* kimora®



[www.kimora.in](http://www.kimora.in)

