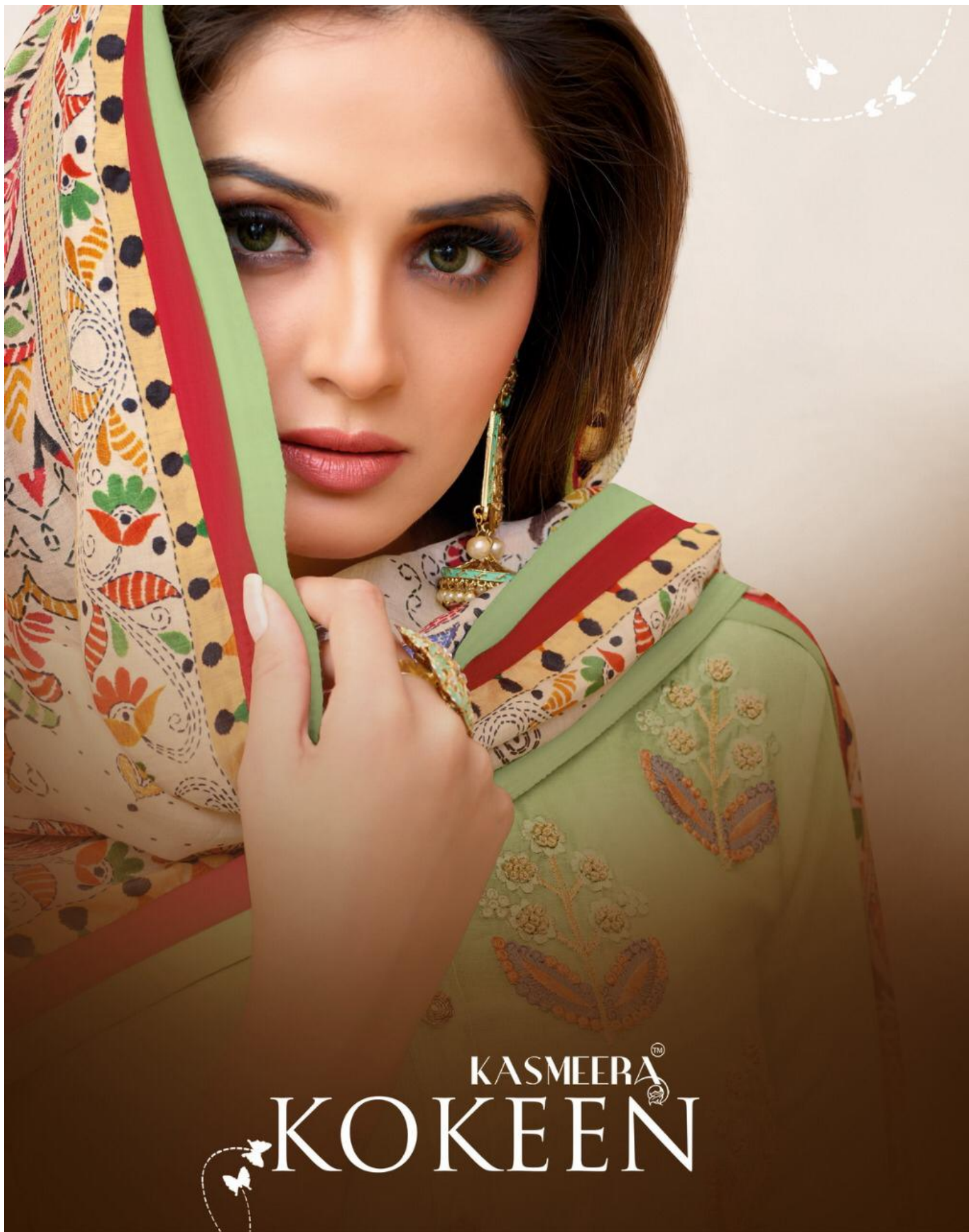


KASMEERA<sup>TM</sup>  
Kokeen



KASMEERA<sup>TM</sup>  
Kokeen

A GIRL SHOULD BE TWO THINGS;  
CLASSY AND FABULOUS



407



IN ORDER TO BE IRREFLECTABLE  
ONE MUST ALWAYS  
BE DIFFERANT.



LOOK EXCLUSIVE FEEL RADIANT  
AN UNATTAINABLE LOOK



409





LOOK EXCLUSIVE FEEL RADIANT  
AN UNATTAINABLE LOOK



410



A GIRL SHOULD BE TWO THINGS  
CLASSY AND FABULOUS





405



406



407



408



409



410

KASMEERA  
KOEEN



KASMEERA®

KASMEERA®  
a quality product

Fabric Detail

D No.	TOP	BOTTOM	DUPATTA
405	Maslin with designer pettern 2.40mtr	Heavy Indo 2.50mtr	Maslin Digital Print 2.25mtr
406	Jam Silk with Embroidery Work 2.40mtr	Heavy Indo 2.25mtr	Chanderi With Heavy Work 2.25mtr
407	Modal Lining Digital 2.40mtr	Heavy Indo 2.50mtr	Naznin With Four Side Work Lace
408	Maslin Embroidery With Sequence 2.40mtr	Heavy Indo 2.25mtr	Maslin Digital Print 2.25mtr
409	Tasar Silk with Sequence Work 2.40mtr	Heavy Indo 2.25mtr	Chanderi Silk with Sequence Work
410	Modal SilkEmbroidery With Khatli Work 2.40mtr	Heavy Indo 2.25mtr	Maslin Digital Print 2.25mtr

MASSES WITH THE SEASONS  
REINTERPRETATION OF IMPERIAL  
ANDROGYNY, BEST SHOWCASED  
THROUGH A GALLERY OF ROYAL  
PORTRAITURE

