

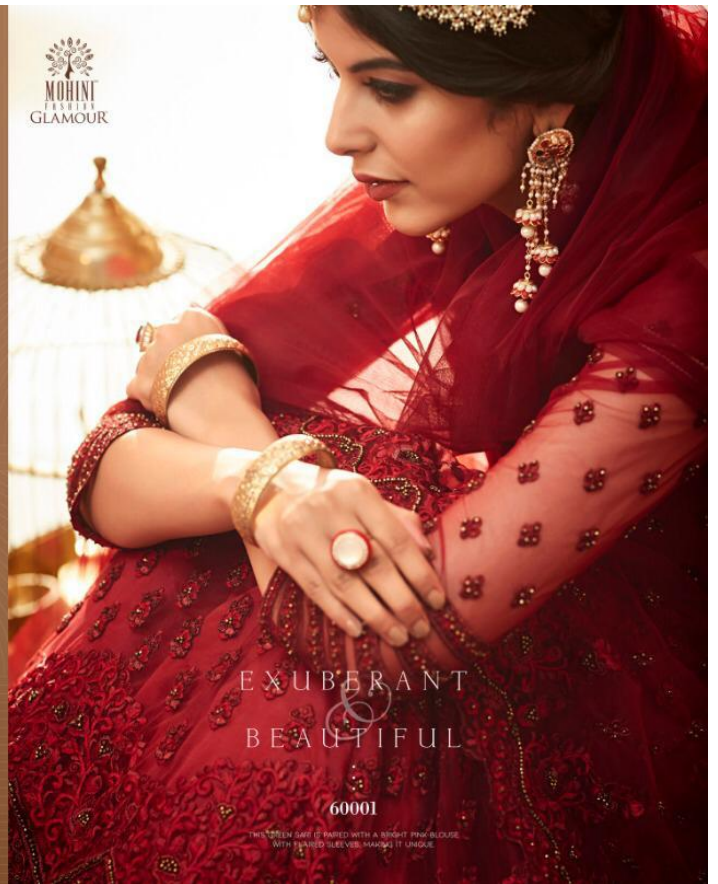


GLAMOUR

VOLUME 60



MOHINI
FASHION
GLAMOUR



EXUBERANT
&
BEAUTIFUL

60001

THIS DRESS IS PAIRED WITH A NIGHT PINK BLOUSE
WITH PLEATED SLEEVES, MAKING IT UNIQUE



EXUBERANT & BEAUTIFUL

Stunning attires for you

This spectacular navy blue dress is great for any occasion whether it be an evening or morning event. The heavy green duppata is the highlight of the dress.





EXUBERANT & BEAUTIFUL

Stunning attires for you

This spectacular navy blue dress is great for any occasion whether it be an evening or morning event. The heavy green duppata is the highlight of the dress.





MOHINI
DESIGN
GLAMOUR

EXUBERANT
&
BEAUTIFUL

THIS GREEN SARI IS PAIRED WITH A BRIGHT PINK BLOUSE WITH FLARED SLEEVES, MAKING IT UNIQUE.

60002



GLAMOUR

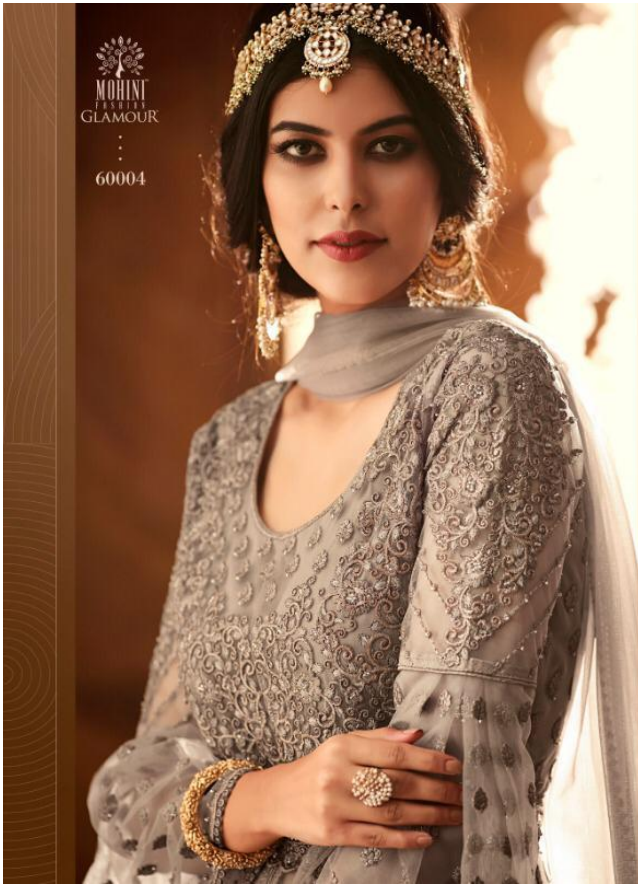
VOLUME 60

Price List

D.NO	FABRIC				RATE
	TOP	INNER	BOTTOM	DUPATTA	
60001	Net with hand khat work	Satin with can can	Santun	Net	4895/-
60002	Net with hand khat work	Satin with can can	Santun	Net	4895/-
60003	Net with hand khat work	Satin with can can	Santun	Net	4395/-
60004	Net with hand khat work	Satin with can can	Santun	Net	4295/-
60005	Net with hand khat work	Satin with can can	Santun	Net	4395/-
Total Suits = 5		Total Suit Cut = 20 mtr			Average Price Rs. 4575/-
		Cost of one set = Rs. 22875/-			
		All "Suit" Accessories Shown In Images Are Also Provided With The Product & Not Charged Separately			







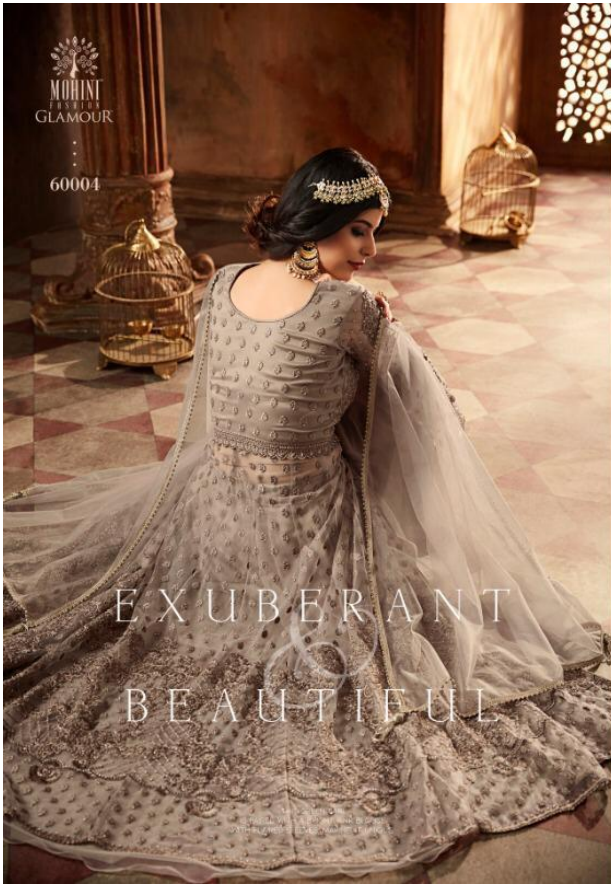


MOHINI
GLAMOUR
60005



EXUBERANT
&
BEAUTIFUL

THIS DRESS IS MADE WITH A LIGHT PINK BLOUSE WITH FLARE SLEEVES MAKING IT





MOHINI
FASHION
GLAMOUR

EXUBERANT
BEAUTIFUL

60003

THE GREEN SAREE
IS PAIRED WITH A BRIDAL PINK DRESS
WITH FLARED SLEEVES AND A LONG SAREE



GLAMOUR

VOLUME 60





60001



60002



60003



60004



60005