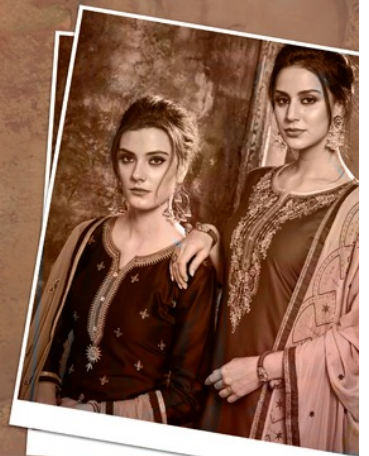






**PATIALA
HOUSE**
VOL-65

The collection was a perfect
blend of Indian silhouettes &
contemporary style



CELEBRATE THIS SEASON WITH
COLOR CONTRASTS THAT PROMISE
TO SHOCK THE SUN & REVEL
IN THE SURPRISE OF THIS
HOT NEW TREND.





D.NO 4311



MAKE A BRIGHT NEW BEGINNING TO THIS SEASON.



**PATIALA
HOUSE** VOL-65



A HOUSE OF ETHNIC DESIGNER
SAREE , SUITS & LEHENGAS

COMPLIMENTARY COPY / NOT FOR SALE







D.NO 4307



IMMERSE YOURSELF IN BRIGHT COLORS & TEXTURES.



D.NO 4302



D.NO 4312







CATALOG NAME : **Patiala House Vol - 65**

PIECES : **12**

	FABRICS DETAILS (Material Only)
TOP	GLACE COTTON
BOTTOM	RAYON WITH WORK
DUPATTA	NAZNEEN WORK WITH FOUR SIDE LESS



We're excited to announce



Has Launched New Catalog

**PATIALA
HOUSE**

Vol-65

BOOK NOW

Fabrics Details

TOP :- Glace Cotton

BOTTOM :- Rayon With Work

DUPATTA :- Nazneen Work With
Four Side Less

No.of Design :- 12

Dispatching :- 5 to 6 Days Later

Booking Started From Now.....

Order Yours Soon.....





D.NO 4310





D.NO 4301



D.NO 4302



D.NO 4303



D.NO 4307



D.NO 4308



D.NO 4309



D.NO 4304



D.NO 4305



D.NO 4306



D.NO 4310



D.NO 4311



D.NO 4312







D.NO 4303

THIS SEASON IS GIVING TO BE BRIGHT & COLORFUL



