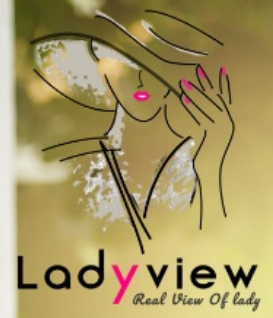




*Aneri*





1003





1003



There are apt for party wear as they exhibit a perfect amalgamation of heavy and light embroidery work.



D.No-1002





1002



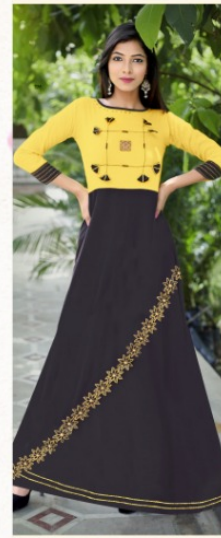
D.No-1001



D.No-1002



D.No-1003



D.No-1004



D.No-1005



There are apt for party wear as they exhibit a perfect amalgamation of heavy and light embroidery work.



D.No-1005





D.No-1001









D.No-1004









1004





*Aneri*