

A woman is seated in a dark, ornate chair, wearing a vibrant purple and gold embroidered dress with intricate patterns and a matching shawl. She is positioned in a classical-style room with white columns, a fireplace mantel adorned with a parrot statue and books, and a dark wooden chair in the background. The floor is covered with a patterned rug, and a table with a candle holder is visible in the foreground.

ZH
ZAURA-HASSAN

L'ère du Luxe



ZH

L'ère du Luxe

ZAURA-HASSAN

L'ère du Luxe



702



703



704



705



ZH
ZAHRA HASSAN

L'ère du Luxe

'Espair' pays homage to festive hand mirror work incorporated with tilla, sequin, chatta patti borders and cutwork for that added touch of splendour. It can be styled in numerous silhouettes as per your choice this wedding season. It is layered over a magnificent champagne gold hand screen printed sharara and draped with organza scenic foil dupata finished with panni sherista embroidered border.



702

L'ère du Luxe





ZH
ZAURA HASSAN



L'ère du Luxe
704



ZH
ZAHRA HASSAN

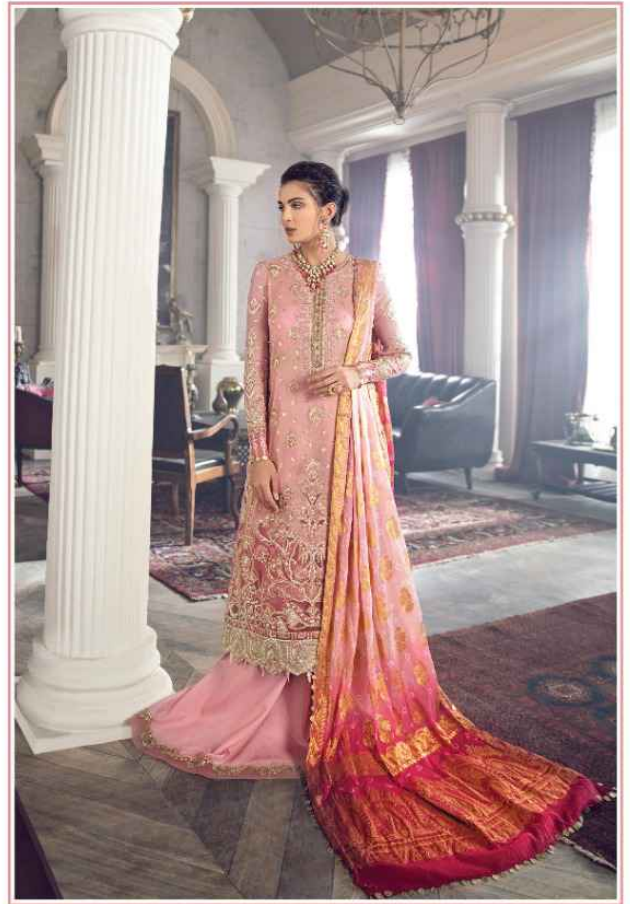


L'ère du Luxe
703



ZH
ZAURA-HASSAN

L'ère du Luxe
703





L'ère du Luxe 705



ZH

L'ère du Luxe

ZAURA-HASSAN