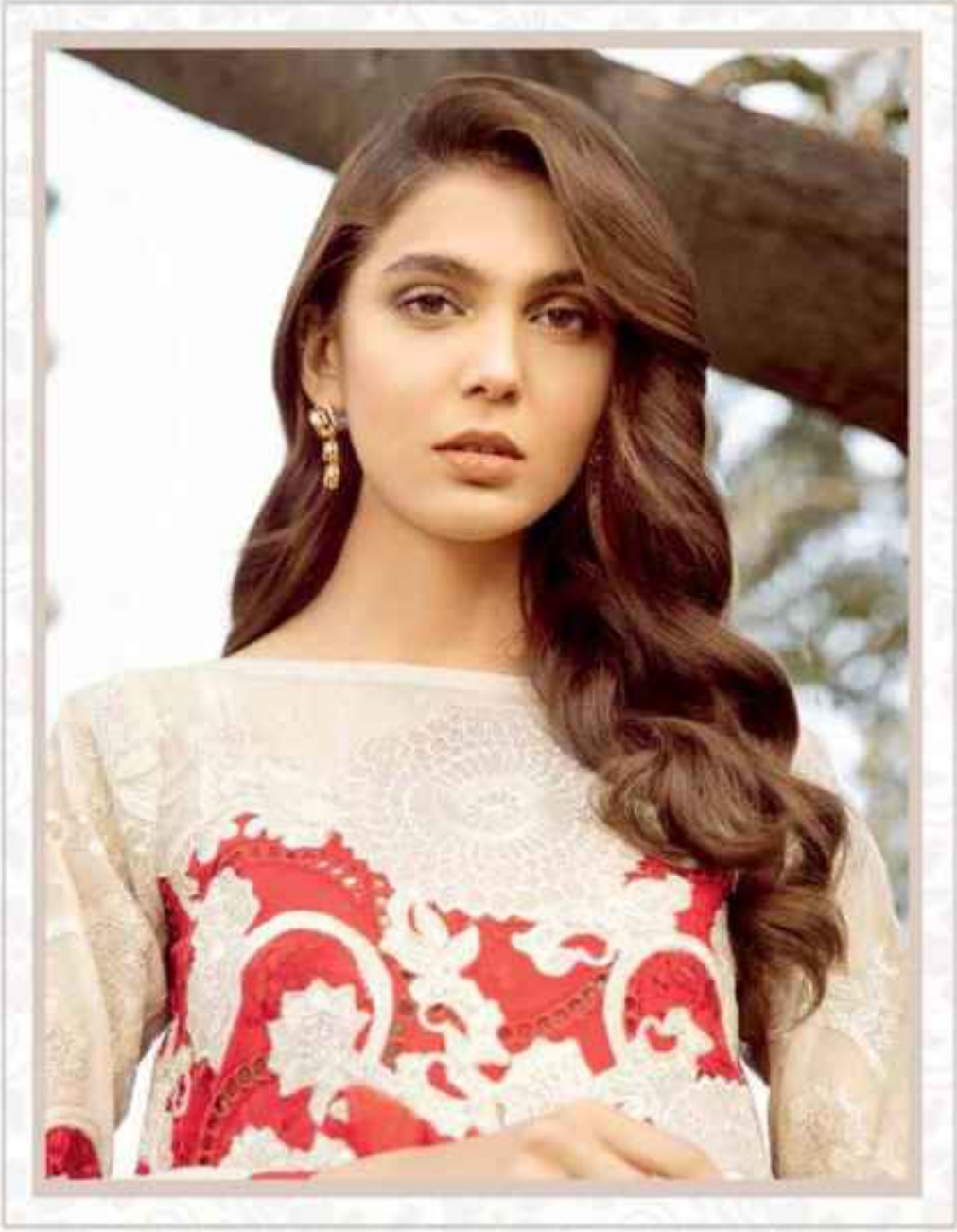


Saniya TRENDZ



CHARIZMA  
*Signature*



BEAUTY  
**BEAUTY OF FASHION**

Here is a collection of saree made in colorful soft colours and crepes using the latest styles of hand embellishments from the hollywood trend town keeping in mind the exclusivity that a woman wishes to present in each party she attends this collection is presented in an affordable range yet in an attractive manner to ensure your parties turn out to be the most enjoyed ever.

**CHARIZMA**  
*Signature*

11007



# Sensible

Sensible colors, excellent designs  
and romantic moods gives perfect  
combination of sense and sensibility



CHARIZMA  
*Signature*

11005



Saniya  
TRENDZ

*Gift your self the beauty you desire*




Saniya TRENDZ

CHARIZMA Signature



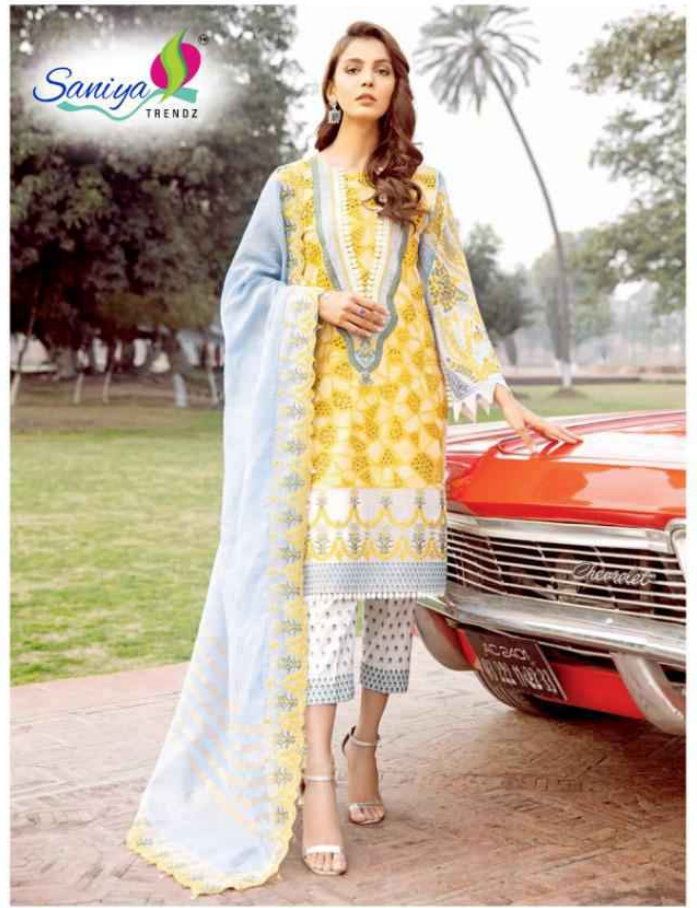

ATTITUDE

FASHIONABLE  
ATTITUDE



CHARIZMA  
*Signature*

11006





11005

11006

11007